



2022

Illinois Agriculture, Food,
and Natural Resources
Education Report

Agricultural Education is delivered through **three** interconnected **components**.

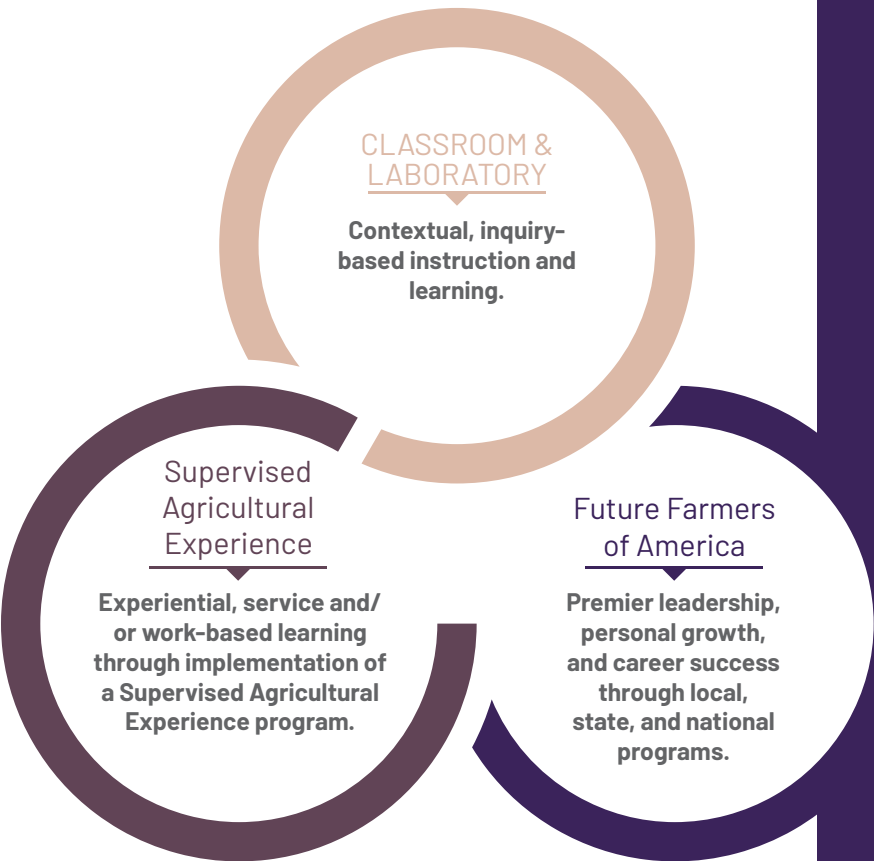


table of contents

Grant Programs.....	4-5
Historical Legislation	6-7
Leaders in Advocacy	8-9
We Need Teachers	10-11
Work-Based Learning	12-13
Career Development	14-16
Premier Leadership in FFA.....	17-19
Community Connections.....	20-21
Agricultural Literacy.....	22-23
Agricultural Education	24-25
Outstanding Educators	26-27
Colleges and Universities	28-35

Check here
for additional
resources.



Agricultural education programs in Illinois public schools are supported by **local**, **state**, and **federal** funding opportunities.

State funding includes specialized funding from the Agricultural Education Line Item in the State Board of Education’s annual budget. This line item funded five unique grant programs in fiscal year 2022, including the Teacher Three Circle Grant program and incentive funding for programs in Grades 5-12. The Teacher Three Circle Grant program partners with local school districts to extend agricultural education teacher contracts to 12 months. Incentive funds are distributed directly to districts based on annually published program quality indicators and can be spent on new equipment, curricular resources, professional development, and student services.

State funding for agricultural education also includes the Career and Technical Education-Improvement (CTEI) fund. CTEI funds and federal Perkins funds are distributed through Illinois’ Education for Employment (EFE) systems. EFE systems are consortiums of school districts that partner to strengthen CTE opportunities in their region. Each EFE system is managed by a director and governed by a Board of Control composed of district superintendents. Agricultural education programs, which are a hallmark of career and technical education at the local, state, and national levels, are supported through these systems in a variety of ways.

40,561

Ag Ed Enrollment, Duplicated (6.12%↑)

35,805

Ag Ed Enrollment, Unduplicated (8.79%↑)
35,556 Public, 249 Private

9,790

Calendar Year SAE Participation (7%↓)
27% of students with SAE Projects

16,508

Calendar Year SAE Participation

\$9,815,444

Calendar Year SAE Earnings (28.50%↓)

23,289

FFA Membership (11.60%↑)

Agriculture in the Classroom (AITC) Data

80 AITC Coalitions

206,194 PreK-12 Students

\$1,710,223 State and Local Funds Invested in AITC

Agricultural Education Program Data

359 Agricultural Education Programs

74.20% Offering AFNR as Science Credit

Ag Ed Teacher Data

479 Agricultural Education Teachers

5% increase from FY 2022

65% Teachers in Three Circle Grant

FCAE Program Data

1641 Professional Development Hours

2 Graduate Courses Offered

882 Onsite or Virtual Program Visits

2,698 Students Reached through Career Presentations

81 Teaching Vacancies Filled

FY22 Line Item Breakdown

Three Circle Grant	\$2,549,710
Incentive Funding Grant	\$1,030,290
University Incentive	\$40,000
GAST	\$300,000
FCAE	\$1,080,000
TOTAL	\$5,000,000

Which role do you serve for
Agricultural Education?
These pages are for you!

Legislative Leader 3-9

Industry Friend 8-13

Aspiring Student 12-21

Community Supporter 18-23

Local Educator 22-31





Teacher Three Circle Model of Agricultural Education

Three Circle grants support implementation of the Three Circle Model of agricultural education by working with Local Education Agencies (school districts and career centers) to compensate teachers for extended working time outside of their regular duties. Teachers must document 400 additional working hours equal to 60 additional days on FFA, SAE, curricular, and professional learning. Teacher does not have to record time every month.

\$2,785,919 Total FY 2022 Allocation

304 Number of Participating Teachers

238 Number of Participating Local Education Agencies



Incentive Funding for Programs in Grades 5-12

Incentive funds support local agricultural education programs for Grades 5-12. Funding can be used for a variety of purposes based on the needs of the local program. Allocations are based on the achievement of program quality indicators each year. Quality indicators address all aspects of school-based agricultural education, including teacher qualifications, student services, courses offered, facility and technology improvements, work-based learning integration, student leadership, and other FFA opportunities.

\$658,889 Total FY 2022 Allocation

\$22.69 per Quality Indicator

347 Participating Local Education Agencies



Incentive Funding for Teacher Preparation Programs

Incentive funds support agricultural education teacher preparation programs at public universities. Funding can be used for a variety of purposes based on the needs of the program and preservice teachers. Allocations are based on the achievement of program quality indicators each year. Quality indicators address all aspects of teacher preparation programs, including teacher readiness, academic advising, course content, preparation for licensure, and comprehensive field experiences offered to preservice teachers.

\$40,000 Total FY 2022 Allocation

\$104 per Quality Indicator

4 Participating Universities



Growing Agricultural Science Teachers

Growing Agricultural Science Teachers (GAST) funds are given to colleges and universities offering an agricultural education program of study to include the Introduction to Agricultural Education course (AGED 100) articulated across the state. Funds support initiatives to recruit, develop, and retain agricultural education teachers. The program has four main objectives — recruitment and retention, development of preservice teachers, professional learning for early career teachers, and professional learning for teacher educators.

\$300,000 Total FY 2022 Allocation

8 Participating Colleges

142 Preservice Teachers Impacted



Dean Dittmar, State
Coordinator



John Heiser, District I
Program Advisor



Luke Allen, District II
Program Advisor



Jennifer Waters, District III
Program Advisor



Megan Coy, District IV
Program Advisor



Casey Bolin, District V
Program Advisor



Mindy Bunselmeyer,
Executive Director



John Edgar,
Associate Director



Andrew T. Klein,
Principal Consultant



Dr. Sheila Rowe,
Principal Consultant

ISBE works with the **Illinois Committee for Agricultural Education** and the **Illinois Leadership Council for Agricultural Education** to administer a statewide program of **agricultural education**.

The Facilitating Coordination in Agricultural Education (FCAE) project coordinates these efforts as they relate to three main purposes – curriculum development, articulating agricultural education across Illinois public schools, and consumer education outreach initiatives.

FCAE Allocation: \$1,080,000



\$855,698

Local Program
Support



\$68,000

Agricultural
Literacy



\$26,500

FFA Center
Services



\$44,294

Teacher Professional
Development



\$15,789

Indirect
Costs



\$12,716

MANRRS Pilot
Project



\$40,500

Website
Management



\$7,070

Curricular Resource
Management



\$6,465

Conference Exhibits



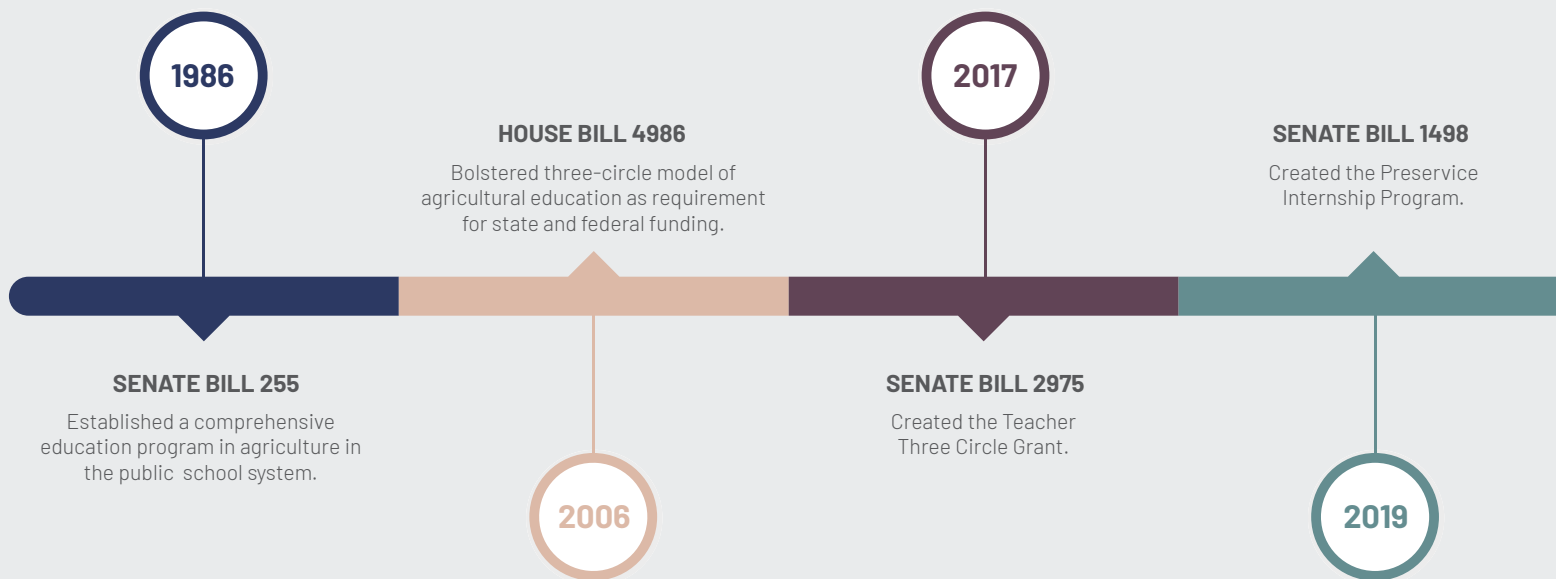
\$2,968

Annual Report

FCAE, the Illinois FFA Center, and ISBE work together to **improve** all aspects of **agricultural education in Illinois**.

- FCAE coordinates the statewide program of agricultural education through local program support, teacher professional development, and agricultural literacy initiatives.
- Illinois FFA Center coordinates professional services for all agricultural education-related organizations to include the FFA student organization, FFA Foundation, FFA Alumni, Illinois Association of Vocational Agriculture Teachers, Illinois Association of Community College Agriculture Instructors, and Professional Agriculture Students.
- ISBE administers state funding for agricultural education to include the FCAE project.





Senate Bill 255 passed and was signed into law on September 19, 1986, creating Public Act 84-1452 and Chapter 122, Section 2-3.80 of the Illinois School Code stating: "The General Assembly recognizes that agriculture is the most basic and singularly important industry in the state, that agriculture is of central importance to the welfare and economic stability of the state, and that the maintenance of this vital industry requires a continued source of trained and qualified individuals for employment in agriculture and agribusiness." SB 255 thereby established a comprehensive education program in agriculture in the public school system – pre-K through adult education – and required that the State Board of Education make this program readily available to school districts.

House Bill 4986 passed Public Act 84-1452, which amended the Illinois School Code, on January 20, 2006, stating: "Provides that a school district that offers a secondary agricultural education program that is eligible for state and federal funding must ensure that, at a minimum, the following are available to its secondary agricultural education students: (1) an instructional sequence of courses approved by the State Board of Education; (2) a state and nationally affiliated FFA Chapter that is integral to instruction and is not treated as an extracurricular activity; and (3) a mechanism for ensuring the involvement of all secondary agricultural education students in formal, Supervised Agricultural Experience activities and programs."

Senate Bill 2975 passed and was signed into law effective January 1, 2017, creating Public Act 99-826 and Section 2-3.80b of the Illinois School Code. This legislation "created an agriculture education teacher grant program to fund personal services costs for agriculture education teachers in school districts. The grants shall be for the purpose of assisting school districts with paying for personal services costs of agriculture education teachers." This grant today is known as the Teacher Three Circle Grant.

Senate Bill 1498 passed and was signed into law effective August 13, 2019, creating Public Act 101-554 and Section 2-3.80d of the Illinois School Code. By this new law, the "State Board of Education must, in consultation with the Board of Higher Education, develop an Agricultural Education Pre-Service Teacher Internship Program, beginning at the secondary education level, for pre-service teaching students." This program today is known as the Preservice Internship Program.



Director of Agriculture Jerry Costello with Illinois FFA State Officers

Historical Legislation

2021

**SENATE BILL 1624 &
HOUSE BILL 3218**

Changes the composition of the Illinois Committee for Agricultural Education.

**FFA MEMBERSHIP
PAID FOR BY DOA**

Illinois Department of Agriculture provides FFA membership dues funds for every student enrolled in Agricultural Education.

**AD ED LINE ITEM
RECEIVES 41% INCREASE**

ISBE Increases Ag Ed Line Item to \$7.05M

HOUSE BILL 3178

Adds agricultural science and agricultural education as course options for university admission.

2022



Senate Bill 1624 and House Bill 3218

passed and were signed into law effective January 1, 2022, creating Public Act 102-0403. This Public Act amended various Acts relating to the governance of public universities in Illinois. With respect to the high school coursework that a person must satisfactorily complete for university admission, adds agricultural sciences as a course option for the science category and agricultural education as a course option for the electives category.

House Bill 3178 passed and was signed into law, creating Public Act 102-0463. This Act amended ILCS 5/2-3/80 effectively changes the composition of the Illinois Committee for Agricultural Education.

The State Board of Education worked with the Governor and state legislature to increase the Agricultural Education Line Item to \$7.05 million to allow for the growth of programs, students, and teachers.



The **Illinois Committee for Agricultural Education (ICAE)** is a group of professionals **tasked with advising the Illinois State Board of Education on agricultural education.**

Pursuant to Illinois School Code (105 ILCS 5/2-3.80), the 13-member committee is composed of members representing a variety of agricultural education roles.



Kevin Daugherty (Illinois Ag In The Classroom)
Chair
Illinois Farm Bureau

Erika Allen (ILCAE)
Urban Growers Collective

Allyn Buhrow (ILCAE)
Pioneer Seed

Douglas Hanson (ILCAE)
ProHarvest Seeds, MWS Seeds

Kim Haywood, Jr. (ILCAE)
Brooklyn Unit School District 188
Lovejoy Technical Academy

Jody Heavner (Secondary Agriculture Teacher)
Pittsfield High School/FFA Advisor

Kaizad Irani Community College Agriculture Teacher)
Parkland College, University of Illinois

Amy Leman (Adult Agriculture Educator)
University of Illinois

Gary Ochs (University Agriculture Instructor)
University of Illinois

Brad Pilcher (FFA Representative)
Bayer Crop Science

Aimee Shasteen (ILCAE)
Farm Credit Illinois

Suzanne Schafer (Secondary Agriculture Teacher)
Taylorville High School/FFA Advisor

The **Illinois Leadership Council for Agricultural Education (ILCAE)** is a volunteer, grassroots agricultural industry group **focused on the expansion and improvement of agricultural education programs** at all levels. ILCAE is responsible for the vision of agricultural education through the Illinois Agricultural Education Plan.



Allyn Buhrow
Chair
Farmer, Pioneer Seeds

Greg Webb, Vice Chair
Archer Daniels Midland (ADM)

Michael Zecher, Secretary
Zecher Farms

Erika Allen
Urban Growers Collective

Allen Dietz
Retired Educator, Dietz Farms

Brenda Dismore
Tyson Foods

Jeff Galle
Global Pork Production
Enterprises

Warren Graeff
Old National Bank

Douglas Hanson
ProHarvest Seeds &
MWS Seeds

Kenny Hartman
Glendell Farms LTD

Kim Haywood, Jr.
Brooklyn Unit School District
188
Lovejoy Technical Academy

Michael Hmurovich
Griffith Foods, Inc.

Chris Kendall
Peoria Educational Region
for Employment Career and
Training

William Kling
Attorney, Community
Collaborative, LLC

Mindy McDermott
The Climate Corporation

Don Moffitt
Retired State Representative

Rod Riech
Brandt Consolidated Inc.

Karen Schieler
Compeer Financial

Kay Shipman
FarmWeek

Haley Siergie
Nutrients for Life Foundation

Holly Spangler
Prairie Farmer & Farm Progress

Tyler Strom
Illinois Agri-Food Alliance

Dan Swanson
Illinois State Legislature

Ryan Tate
Illinois Farm Bureau

Cynthia Tucker
PepsiCo

Wyatt Williamson
Edgar County Farm Bureau

The **National FFA Organization** works through state associations to **endorse and deliver official charters to local schools** when meeting the requirements to start an official FFA chapter. Charters are signed by national and state leaders, as well as the first members of the local chapter who are forever dubbed as charter members.



National FFA Organization

Founded 1928

Charter No. IL0543

This is to certify that the Rolling Meadows FFA Chapter
having satisfied all the requirements for affiliation with the
Illinois FFA Association
and the National FFA Organization
is hereby officially chartered as a duly recognized chapter
and is entitled to all of the rights and privileges pertaining thereto.

In witness whereof, we have affixed our signatures
this 15th day of July, 2019

Charter Members

Sam Funk

May Schild

2019

Avery Connor

Sam

Joseph McAnany

Law LeFevour

The **number of openings** for agriculture teachers **exceeds the number of teaching candidates**, so agricultural education is recognized by the Illinois General Assembly as an area of **high staff shortage** (IL110 ILCS 947/65.25). **Aggressive strategies** and **targeted support** are utilized to **recruit, develop, and retain high-quality agriculture teachers** in Illinois public schools.

Fiscal Year	Agricultural Education Job Openings	Graduates in AFNR Teacher Education Programs	Non-traditionally Licensed Teachers Hired in Ag Ed
2020-2022	66	22	14
2022-2022	84	36	21
2022-2023	139	33	36

State Teach Ag Results Program

The State Teach Ag Results (STAR) program is a project of the National Teach Ag Campaign, a teacher recruitment and retention initiative managed by the National Association of Agricultural Educators. STAR provides funds for states to develop sustainable programs to increase the number of agriculture teachers. High school and college students explore becoming an agriculture teacher.

\$8,377 STAR Dollars in FY 2022

74 Preservice Teachers Impacted



Preservice teachers visit with Jesse Faber (current agriculture teacher and FFA advisor) during their bus tour in 2022

Teacher Contract Lengths

70% are 40-60 Days Beyond

3% are 31-45 Days Beyond

7% are 16-30 Days Beyond

5% are 01-15 Days Beyond

15% are 0 Days Beyond

Recruitment Activities for High School Students

52 Students Competing in the Agricultural Education CDE

37 Junior Internships with Agricultural Educators

2,698 Students Reached through AFNR Career Presentations

104 Students Attending ELITE Conference



Students interested in becoming teachers participate in hands-on activities at the ELITE Conference in 2022

Growing Agricultural Science Teachers Program

GAST is a grant project of the Illinois State Board of Education. GAST funds support the efforts of teacher preparation programs to recruit, develop, and retain agricultural education teachers. Allocations are contingent on annual funding priorities. Funding in FY 2022 was used for student scholarships, mentorship programs, and professional development for early career agriculture teachers.

\$300,000 GAST Dollars in FY 2022

142 Preservice Teachers Impacted

195 Early-Career Teachers Impacted

Teacher Three-Circle Grant Program

The Three Circle Grant program is a project of the Illinois State Board of Education. Three Circle funds support an educator's extended salary beyond the regularly assigned teaching duties. Participating school districts partner with ISBE to provide salary and benefits for 400 additional working hours. ISBE pays a greater amount for new programs.

65% of Illinois Teachers Participating

304 Participating Teachers

\$18,328 Average Salary Increase

421 Average Hours Worked Outside of School

265 Average Hours on FFA

35 Average Hours on SAE

120 Average Hours on Curricular/PD

Retention Activities for College Preservice Teachers

43 Student Teacher Awards at IAVAT Summer Conference

67 Participants in IAVAT Student Branch Activities

22 College-level Internships with Agricultural Educators

Retention Activities for Current Teachers

44 Teachers at 1st Year Teachers' Conference

22 Teachers at 2nd Year Teachers' Conference

1,641 Participants in SBAE Professional Development

4 New Teacher Retention Grants from IAA Foundation

100% of students majoring in Agricultural Education are eligible for federal loan forgiveness and federal Teach grants

We Need Teachers

Students by Pathways



The **Agricultural, Food and Natural Resources (AFNR) career cluster** is **focused** on the production, processing, marketing, distribution, financing, and development of **agricultural commodities** and **resources**, including food, fiber, wood products, natural resources, horticulture, and other plant and animal products or resources. ISBE recognizes eight unique pathways.



Industry-Recognized Credentials

An industry-recognized credential is a verification of a student's qualification or competence. A third party, such as an organization or employer, issues a credential. Credentials are valued in the labor market and are a validation of knowledge and skill. They can take many forms, including certifications, certificates, and licenses. AFNR programs in Illinois offer many credentials, including:

1. Occupational Safety and Health Administration (OSHA) Credentials
2. Illinois Department of Natural Resources Hunter Safety Certification
3. Illinois Department of Agriculture Pesticide Applicator Certification
4. National Association of Veterinary Technicians in America Certifications

Program Advisory Councils

Quality AFNR programs have close ties with business and industry. These partnerships are critical to ensuring programs meet current occupational needs. Program Advisory Councils, which are required for CTE Programs of Study,

are one of the most effective ways to establish and strengthen these partnerships. An advisory council is a group of stakeholders that may include representatives from local business and industry, school administrators, faculty, staff, and representatives

from transfer institutions who advise the institution on the development, implementation, and evaluation of the program. ISBE utilizes the Illinois Committee for Agricultural Education as a statewide advisory council, and local programs are incentivized to implement local advisory councils through the Incentive Funding Grant.

AFNR Model Program of Study

The Illinois Community College Board (ICCB) sponsored the development of Model Programs of Study Guides in crucial industry areas as part of the Illinois State Plan for Strengthening Career and Technical Education for the 21st Century Act (also known as the Perkins V Plan). The AFNR Model Program of Study Guide was developed in consultation and collaboration with the Illinois State Board of Education and other notable AFNR stakeholders.

Work-Based Learning (WBL) is sustained interaction with professionals in real workplace settings or simulated environments in school that foster in-depth, **firsthand engagement** with the tasks required for specific AFNR careers.

These tasks are also aligned to relevant AFNR curriculum and instructional standards. In local AFNR programs, WBL is commonly facilitated through Supervised Agricultural Experience (SAE) programs. SAE opportunities are endless and entirely based on exploring students' passions and career interests. Students will start with a Foundational SAE, then expand to include one or more Immersion SAEs.

SAE Participation Data

10,890 (30%) Students with SAEs (3.25% ↑)
16,523 Unique Projects (6.08% ↑)
\$15,606,707 SAE Earnings (11.84% ↑)
1,204,287 Journal Entries (17.83% ↓)

Project Types

47% Placement/Internship
27% Entrepreneurship/Business
23% Foundational
3% Research/Agriscience

Project Levels

89% Individual
10% School-based
1% Service-Learning

Projects by Pathway

32% Animal Systems
17% Plant Systems
8% Food Products and Processing
6% Agribusiness Systems
6% Power, Structure, and Technical
6% Career Ready Practices
2% Environmental Service
1% Natural Resources
0.21% Biotechnology Systems

Work-Based Learning

FFA Degrees and Star Awards

Student members of FFA are recognized through a sequence of awards based on achievement in multiple aspects of the AFNR instructional program, including academic success, leadership roles, and SAE progression. These awards are known as Degrees.

Discovery Awards

The Discovery FFA Degree is awarded to members in Grades 7 and 8 at their local chapter banquet each year. Those middle school members receiving their Discovery Degree can also apply for statewide Star Awards in specific project areas. For this year, those went to:

Star Agribusiness: Bryson Stickler, Pleasant Plains

Star Agricultural Placement: Amelia Krispinsky, Pleasant Plains

Star Farmer: Drake Slutz, Sycamore

State Awards

The State FFA Degree is the highest honor the Illinois Association FFA can bestow on a student. This past year, 521 members were awarded the coveted State FFA Degree. From these awards, outstanding members are recognized as "stars" in their respective project areas. Illinois' stars in FY 2022 are:

Star Agribusiness: Katie Wagner, Mercer County

Star Agricultural Placement: Loren Pribble, Goreville

Star Agriscience: Lizzie Schafer, Taylorville

Star Farmer: Braydon DeCounter, West Prairie

National Awards

The American FFA Degree is the highest honor the National FFA Organization can bestow on a student. This past year, 134 members from Illinois were awarded the American FFA Degree. From these awards, Illinois selects outstanding members to be considered by National FFA for American Star Awards. Those stars are:

Star Agribusiness: Jarrett Lewis, Wayne City

Star Agricultural Placement: Garrett Granby, Seneca

Star Farmer: Makenna Green, Arthur-Lovington-Atwood-Hammond



2022 National Proficiency Champions: Lizzie Schafer, Taylorville and Ty Steffen, Newark

Agricultural Communications	Elaan Bader, Litchfield
Agricultural Education	Morgan Wirt, AIWood
Agricultural Mechanics Design and Fabrication	Taylor Snook, Cambridge
Agricultural Mechanics Repair and Maintenance – Entrepreneurship	Lane Sauder, Tremont
Agricultural Mechanics Repair and Maintenance – Placement	Aidan Harner, Flanagan-Cornell
Agricultural Processing	Avery Strohm, Earlville
Agricultural Sales – Entrepreneurship	Halie Kohl, Herscher
Agricultural Sales – Placement	Marie Baxley, Unity-Tolono
Agricultural Services	Ty Jensen, Pontiac
Agriscience Research – Animal Systems	Delana Erbsen, Eastland
Agriscience Research – Integrated Systems	Megan Baker, Neoga
Agriscience Research – Plant Systems	Dakoda Maguire, Princeville
Beef Production – Entrepreneurship	Ross Stabenow, Lena-Winslow
Beef Production – Placement	Lizzie Schafer, Taylorville
Dairy Production – Entrepreneurship	Wyatt Zehr, Flanagan-Cornell
Dairy Production – Placement	Nevin Erbsen, Eastland
Diversified Agricultural Production	Drew Mickey, Taylorville
Diversified Crop Production – Entrepreneurship	Ty Steffen, Newark
Diversified Crop Production – Placement	Cole Rappe, Meridian-Macon
Diversified Horticulture	Eli Arenas, South Central
Diversified Livestock Production	Grace Brown, Flanagan-Cornell
Environmental Science and Natural Resources Management	Quinn Gajewski, Waltonville
Equine Science – Entrepreneurship	Eric Wisely, Nashville
Equine Science – Placement	Jacqueline Euker, Marengo
Fiber and Oil Crop Production	Tommy Waters, Goreville
Food Service	Sidney Stiers, Williamsfield
Forage Production	Brandon Wisely, Nashville
Forest Management & Products	Cole Roach, Sycamore
Fruit Production	Bree Portz, Marissa
Goat Production	Anna Crites, Rantoul
Grain Production	Ethan Pratt, Amboy
Landscape Management	Josie Korte, Scales Mound
Nursery Operations	Sam Jones, Flanagan-Cornell
Outdoor Recreation	Karley Bogatzke, Pittsfield
Poultry Production	Ethan Main, ROWVA
Safety	Benjamin Vandigo, Scales Mound
Sheep Production	Owen Torrance, West Prairie
Small Animal Production and Care	Kathryn Wagner, Mercer County
Specialty Animal Production	Emma Wiker, Athens
Specialty Crop Production	Colton Blunier, Midland
Swine Production – Entrepreneurship	Mackenzie Landmann, Highland
Swine Production – Placement	Dani Rubenacker, Hamilton County
Turf Grass Management	Blake Twenhafel, Wesclin
Vegetable Production	Kendra Downing, Cambridge
Veterinary Science	Grace Pollitt, Rushville-Industry
Wildlife Production and Management	Evan Kraft, Normal



**Service-Learning
State Winner:**
William Weber,
Flanagan-Cornell
More on Page 20.

Career Development Events (CDE) are team-based challenges for FFA members that focus on **skill development** and **career preparation**. These competitive events develop individual responsibility, foster teamwork, and promote communication while recognizing the value of ethical competition. Members expand their knowledge base by interacting with peers and teachers, as well as business and community leaders, to gain a complete and comprehensive knowledge about specific careers. Events are also aligned to Illinois Learning Standards.



Prairie Central receives National Plaque for Dairy Cattle Evaluation



Prairie Central hears announcement of National Champion

CDE	Participation	State Winner
Agricultural Business Management	28%	Prairie Central
Agricultural Communications	5%	Streator
Agricultural Education	15%	Drexel Douglass, Normal
Agricultural Mechanics	43%	Prairie Central
Agricultural Sales	32%	Unity-Tolono
Agronomy	63%	Eureka
Dairy Cattle Evaluation	75%	Non-Reasons: Prairie Central Reasons: Prairie Central Middle School: Carlyle
Dairy Cattle Handlers	3%	Delana Erbsen, Eastland
Environmental & Natural Resources	15%	South Central
Food Science and Technology	25%	Somonauk-Leland-Sandwich
Forestry	31%	High School: Olney Middle School: Liberty
Horse Evaluation	50%	Non-Reasons: Sherrard Reasons: Olympia Middle School: AlWood
Horticulture	40%	Seneca
Job Interview	49%	Paige Lemenager, Normal West
Land Use	51%	High School: Cambridge Middle School: Liberty
Livestock Evaluation	44%	Non-Reasons: United Reasons: Taylorville
Meats Evaluation & Technology	30%	Prairie Central
Milk Quality & Products	45%	High School: Prairie Central Middle School: Clinton
Poultry Evaluation	40%	Prairie Central
Quiz Bowl	47%	Marissa
Veterinary Science	35%	Normal

*Percentages based on the number of programs that participated in these events at or above the section level.

Career Development

Students grow in **technical skills** and **professional knowledge** as they compete with their peers in section, district, and state-level **Career Development Events**.



The **Illinois Agriscience Fair** recognizes students who gain **real-world, hands-on experiences in agricultural enterprises**. Students use scientific principles and emerging technologies to solve complex problems related to agriculture, food, and natural resources. The Agriscience Fair is for middle and high school students. Participation begins at the local level and progresses to district, state, and national levels.



Samantha Alvarez and Mr. Robinson



Greyson Applebee, Gehrig Bunselmeyer, and Mrs. Crouch



Olivia Shike and Mr. McCabe

Project Category	Grades 7-8	Grades 9-10	Grades 11-12
Animal Systems	High Individual: Drake Slutz, Sycamore High Team: none	High Individual: Brody English, Mt. Carmel High Team: Drew Mickey & Jay Bliler, Taylorville	High Individual: Olivia Alka, Mt. Carmel High Team: none
Environmental Service and Natural Resource Systems	High Individual: none High Team: Ayden Miller & Tristen Hester, Southeastern	High Individual: Megan Baker, Neoga High Team: Greyson Applebee & Gehrig Bunselmeyer, Maroa-Forsyth	High Individual: Samantha Alvarez, Central Burlington High Team: none
Food Products and Processing Systems	High Individual: Deacon Waner, Southeastern High Team: none	High Individual: Allie Branch, Cisne High Team: none	High Individual: Cooper Lee, Southeastern High Team: Charles Breed & Alexi Haas, Stockton
Plant Systems	High Individual: none High Team: Kenzie Grisworld & Riley Smith, Southeastern	High Individual: Lainie Clark, Fairfield High Team: none	High Individual: Blake Twenhafel, Wesclin High Team: Kevin Hyder & Isabella Cline, Cisne
Power, Structural, and Technical Systems	High Individual: none High Team: none	High Individual: Hadley Walker, Cisne High Team: Liliana Weese & Gracie Arthur, Southeastern	High Individual: Elaan Bader, Litchfield High Team: none
Social Systems	High Individual: none High Team: none	High Individual: Olivia Shike, Unity High Team: Abby Norris & Abby Erlenbush, Taylorville	High Individual: none High Team: Allyson Yoakum & Lorelei Darlak, Sycamore

"I **believe** in
leadership from
ourselves and
respect from
others."



Leadership Development in FFA

Local AFNR programs develop student leadership through FFA programs at the local, state, and national levels. FFA members focus on skill development through Leadership Development Events (LDE). These competitive events develop individual responsibility, foster teamwork, and promote communication while recognizing the value of ethical competition. Events are also aligned to Illinois Learning Standards.

LDE	Participation	State Winner
Agricultural Issues	4%	Greenfield
Conduct of Chapter Meetings	15%	Amboy
Creed Speaking (Grades 7-9)	45%	Brianna Kruse, Staunton
Extemporaneous Public Speaking	50% for All Public Speaking	Lauren Wolter, Central at Breese
Prepared Public Speaking		Morgan Mouser, Tri-Valley
Parliamentary Procedure	29%	Cisne

Leadership Conferences

Local programs promote leadership and personal growth through conferences held at the local, state, and national levels. Conferences looked different in 2022 because of pandemic-related restrictions, but despite these challenges members and student leaders came together for team-building and peer networking.

Conference	Audience	Host(s)	Location	Participation
Greenhand	New Students	LLCC, SIUC, UIUC, WIU	Regional Locations	Regional Events
Ground Zero	Grades 9-10	State FFA	SIUC, UIUC, WIU	886
COLT	Chapter Officers	SIUC	Carbondale	Regional Event
BUILD	Grades 11-12	ISU	Normal	500
STAR	Section Officers	BHC, JJC, JWCC, LLC, and SIUC	Regional Locations	140
Premier 20	Student Leaders in FFA and 4-H	Illinois Farm Bureau	Bloomington	10
WLC	FFA Members Across the Nation	National FFA	Washington, D.C.	49

*Percentages based on the number of programs that participated in these events at or above the section level.

FFA membership is an investment in a student's future. **Participation** can be an **uplifting** and **community-building** experience that contributes positively to **personal growth**, including mental and emotional well-being.

In addition to personal gains, FFA membership also builds career skills and professional success for students as they network with industry professionals; explore options for careers; and develop essential skills like public speaking, interviewing, and networking.

FFA also makes a positive difference in communities. Strong chapters are built by strong members, and strong members who come together can have a greater impact on their school and community than they could ever have had independently. These are the primary returns on investing in FFA members – premier leadership, personal growth, and career success. Join your local chapter to reap the full benefits of our wonderful organization!

The Value of Leadership in FFA

There are many positive aspects of FFA membership. Ask any former member what they remember most about their time in the FFA, and you will likely get a different answer inspired by their unique experiences. FFA members take ownership in their experiences – all of which develop leadership and teamwork skills. Competitive events, such as public speaking, parliamentary procedure, and agricultural issues, give members a voice in discussing important topics with their local chapter or the agricultural industry. These experiences give members confidence in handling real-world situations by sharing opinions, analyzing problems, or working with a team to make decisions.

Conferences are perhaps the most memorable, especially for new members. Meeting others from different backgrounds and communities teaches students to respect others' ideas and perspectives. Serving as an officer is perhaps the most demanding and rewarding experience for a student. The variety of roles and responsibilities often puts student officers in charge of tasks such as leading meetings, tracking chapter finances, managing public relations, coordinating service projects, and mentoring new students. Through these responsibilities, members develop confidence that you don't often experience through other youth programs, and that is because FFA truly is a student-led organization.

Student leadership, work ethic, and inspiration are at the **heart of this organization**, and **all members benefit** from this **system and structure of leadership** that is **FFA**.



20,772

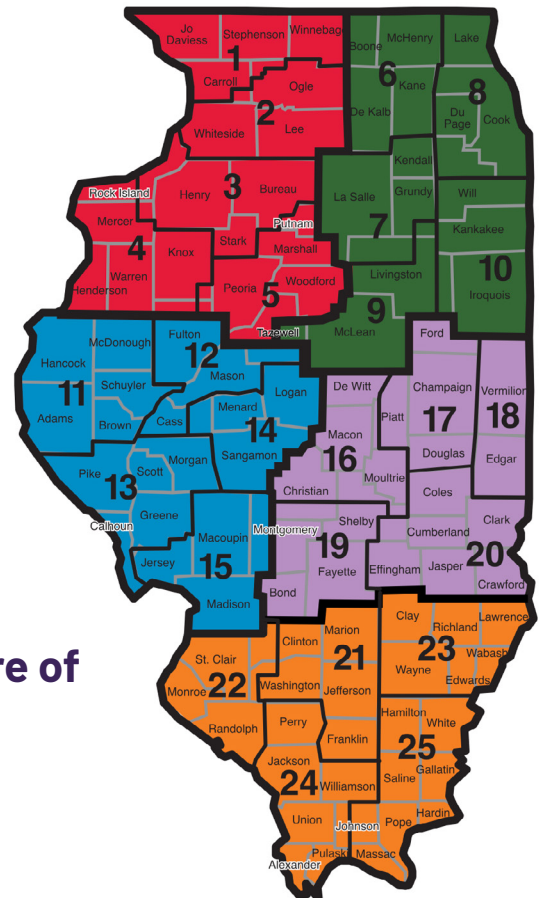
FFA Members FY 2020 (8%↑)

20,583

FFA Members FY 2021 (1%↓)

23,289

FFA Members FY 2022 (13%↑)



Premier Leadership in FFA

Gender	FY20	FY21	FY22	Change from FY21
Male	11,498 (55.4%)	11,663 (56.7%)	13,108 (56.3%)	+1,445 Members
Female	9,047 (43.6%)	8,675 (42.1%)	9,863 (42.4%)	+1,188 Members
Non-Binary	9 (0.0%)	20 (0.1%)	172 (0.7%)	+152 Members
Non-Disclosed	218 (1.0%)	225 (1.1%)	146 (0.6%)	-79 Members

Race/Ethnicity	FY20	FY21	FY22	Change from FY21
Asian/Pacific Islander	97	93	141	+1.52%
Black	810	946	1,088	+1.15%
Hispanic/Latino	641	605	759	+1.25%
Native American	122	78	88	+1.13%
Two or More	321	337	451	+1.34%
White	18,064	17,947	20,429	+1.14%
Non-Disclosed	717	577	333	+0.58%



Team of 2022-2023 State Officers

Our Leadership Structure

Twenty-five Section Presidents and five Major State Officers work together to lead the state FFA throughout the year. Major State Officers postpone college and career for one year to serve the FFA. This year's state officers are:

President: Rachel Hood, Rushville - Industry
 Vice President: Derek Sample, Sesser - Valier
 Reporter: Levi Maierhofer, Seneca
 Secretary: Haley Bode, Waterloo
 Treasurer: Kate Colgan, Princeville



Gracie Murphy, Macomb FFA, was elected the 2022-2023 National FFA Eastern Region Vice President. Gracie was the Illinois FFA State Secretary in 2021-2022. Her SAE's included agricultural education, food service, and small animal. Gracie is a freshman at Southern Illinois University Carbondale studying Agricultural Education.

The **National Chapter Award (NCA) program** is designed to recognize FFA chapters that **actively implement the mission and strategies of the organization**. The **2022 State Premier Chapter** is **Streator FFA Chapter** in Streator, Illinois.

Streator FFA received the highest overall score on the NCA program in Illinois, a direct result of students' hard work and dedication along with the leadership of quality agricultural education teachers. Student officers are responsible for planning and implementing the annual Program of Activities, which this year included several innovative activities.



Streator FFA Think OINK



Streator FFA Seeding Streets



Streator FFA Flap Jack

Premier Chapters by Section

1	Scales Mound
2	Amboy
3	Cambridge
4	Knoxville
5	Midland
6	Central Burlington
7	Streator
8	Chicago Ag Sciences
9	Pontiac
10	Tri-Point
11	Rushville-Industry
12	Midwest Central
13	Pittsfield
14	Athens
15	Lincolnwood
16	Blue Ridge
17	Paxton-Buckley-Loda
18	Salt Fork
19	Greenville
20	Neoga
21	Mount Vernon
22	Waterloo
23	Edwards County
24	Goreville
25	Eldorado

Service-Learning SAE Programs

A service-learning Supervised Agricultural Experience (SAE) is conducted by one or more students in which they plan, conduct, and evaluate a project designed to provide a service to their local school, public entities, or the community. It must benefit an organization or group other than the FFA chapter.

229 Service-Learning Projects

23 Students with Service-Learning SAEs

100 FFA Chapters with Service-Learning SAEs

Service-Learning Winner in 2022

William Weber from the Flanagan-Cornell FFA Chapter is the 2022 State Proficiency Winner in the area of Service Learning. His SAE coaligned with his Eagle Scout project which consisted of cleaning up and improving an area park. Goals for the project included clearing and maintaining specific areas of overgrown brush and building and installing kiosks with educational materials. William developed many skills during this project. He assembled volunteers, gathered building materials, maintained safe working practices, and coordinated all project components.

Community Connections



A project designed to involve all the members of the Cambridge FFA Chapter and help them improve their personal growth resulted in a top national chapter honor. The Cambridge FFA Chapter received the 2022 Premier Chapter: Growing Leaders award during the 95th National FFA Convention and Expo in Indianapolis. "We're still a little worn out from it," said Trent Taber, FFA adviser for the Cambridge, Illinois, chapter. "I think the students were a little overwhelmed at first because it requires a lot of preparation to get all the facts and details of our activities," Mr. Taber said. Students Brooklyn Humphrey and Taylor Pace put together the idea for the five-episode podcast during the summer of 2021. Topics included self awareness, time management, advocacy, finance and diversity. 100% of chapter members listened to the podcasts. "I think what really set the girls apart when they presented is they showcased how one activity branched over to the other activities we do in our national chapter award," Taber said. "They did a great job on that."



Illinois FFA Alumni

Interested in supporting your local agriculture program and FFA chapter? Former FFA members and interested adults are a natural, supportive resource for FFA advisors and their students. A local FFA alumni chapter helps to rally the community around agricultural education and FFA activities. FFA alumni chapters also provide a helping hand to FFA advisors in coordinating activities for the local FFA chapter.



218 Alumni Chapters in Illinois

10,550 Alumni Members in Illinois

55% of FFA Chapter with Active Alumni

223 advisory councils

Alumni and Advisory Councils

Quality programs have close ties with their local agricultural industry. An advisory council is a group of stakeholders that may include representatives from local businesses, school administrators, faculty, and staff who advise the program on development, implementation, and evaluation of the program. As most FFA alumni chapter members fit these same roles, teachers commonly use the local alumni in place of a separate advisory council. This can be an effective structure as FFA alumni meetings can also serve as program advisory meetings.



Illinois FFA Alumni Board, 2022



The **Agriculture in the Classroom (AIRC)** program provides **accurate, standards-based agricultural classroom materials** and **resources to preK-12 teachers** across the state.

206,194
PreK-8 Students Reached

80
Agricultural Literacy County Coalitions
(Covering 86 counties)

\$646,981
Dollars Awarded for County Grants
(9.5% of these funds from Ag Ed Line Item)

\$8,087.26
Average Dollars Awarded per Coalition

24,476
PreK-8 Teachers Engaged in AIRC

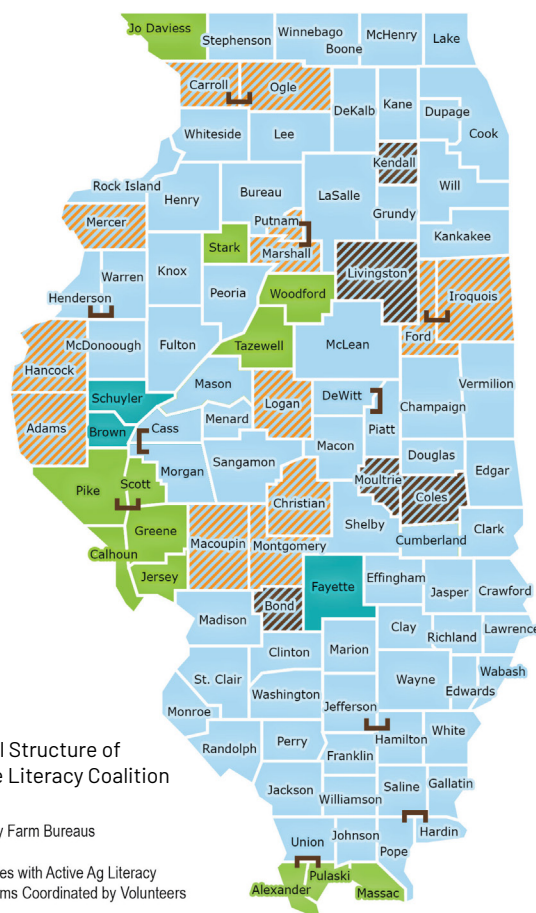
2,900
Schools in IL Engaged in AIRC

85,171
Community Members Engaged in
Agricultural Literacy through AIRC

\$1,710,223
State and Local Dollars Invested
for AIRC Statewide

3,132
Volunteers

Using the established network of county agricultural literacy coordinators, Illinois AIRC continued to be Illinois' leader in agricultural literacy programming. Matching grants were provided to county coalitions to develop an advisory council and hire an AIRC coordinator. Financial support for AIRC was provided by agricultural organizations and foundations, business and industry partners, commodity groups, farm bureaus, extension, soil and water conservation districts, and private individuals.



Fiscal Structure of
Agriculture Literacy Coalition

- County Farm Bureaus
- Counties with Active Ag Literacy Programs Coordinated by Volunteers
- Counties Funded by County Money
- U of I Extension
- SWCD

Exploring Agricultural Careers in Grades 5-8

Perkins V allows for federal career and technical education funds to provide career exploration and development activities in Grades 5-8, while state CTE funds can support these activities in Grades K-8. Agricultural education in Illinois has included middle school students since 2009. AFNR courses available to students before ninth grade include Career Exploration – a general careers course that includes exploration of all CTE clusters – and Exploratory Agricultural Science. In Exploratory Agricultural Science, students learn fundamental concepts to serve as a foundation for future courses in high school. Topics include, but are not limited to, animal and plant science, agribusiness, horticultural science, agricultural mechanics, and food science.

Models of Agricultural Career Exploration in Grades 5-8

Agricultural Education is delivered in Grades 5-8 using different models. Some programs utilize one teacher who instructs both middle and high school students while others utilize a teacher dedicated to just middle school instruction. Ninety-seven local programs (27 percent statewide) report offering AFNR courses to students in Grades 5-8. Approved AFNR courses for middle school include Career Exploration and Exploratory Agricultural Science. Middle school courses offered in AFNR are often implemented in a quarterly rotation with other electives, but may also be offered as a semester- or year-long experience. Course descriptions, recommended outlines, and standards-aligned curricular resources can be accessed on the Illinois Agricultural Education website.

Seventy-three percent of programs offering middle school AFNR courses report using a shared classroom/laboratory space for both middle and high school students. Nine local programs reported engaging middle school students in career exploration activities like leadership conferences, college open houses, and the Farm Progress Show. Nineteen programs reported hosting guest speakers in middle school courses, and 30 programs engaged middle school students in career development events like horticulture, livestock evaluation, and veterinary science. See more information on middle school agricultural education below.

91 Programs offering MS Courses equivalent to 10-25% local full-time equivalent (FTE)

12 Programs offering MS Courses equivalent to 26-50% local FTE

3 Programs offering MS Courses equivalent to 51-74% local FTE

14 Programs offering MS Courses equivalent to 75% or more of local FTE

47 Programs include MS AFNR Activities in local Annual Report

Middle School FFA Membership

Students in Grades 7 and 8 are eligible for FFA membership in Illinois. Opportunities for these members include career and leadership development, participation in SAE programs, and achievement of the FFA Discovery Degree. Middle school students are eligible for all FFA activities, including Leadership Development Events (LDE), with the exception of those specifically age-restricted in the rules.

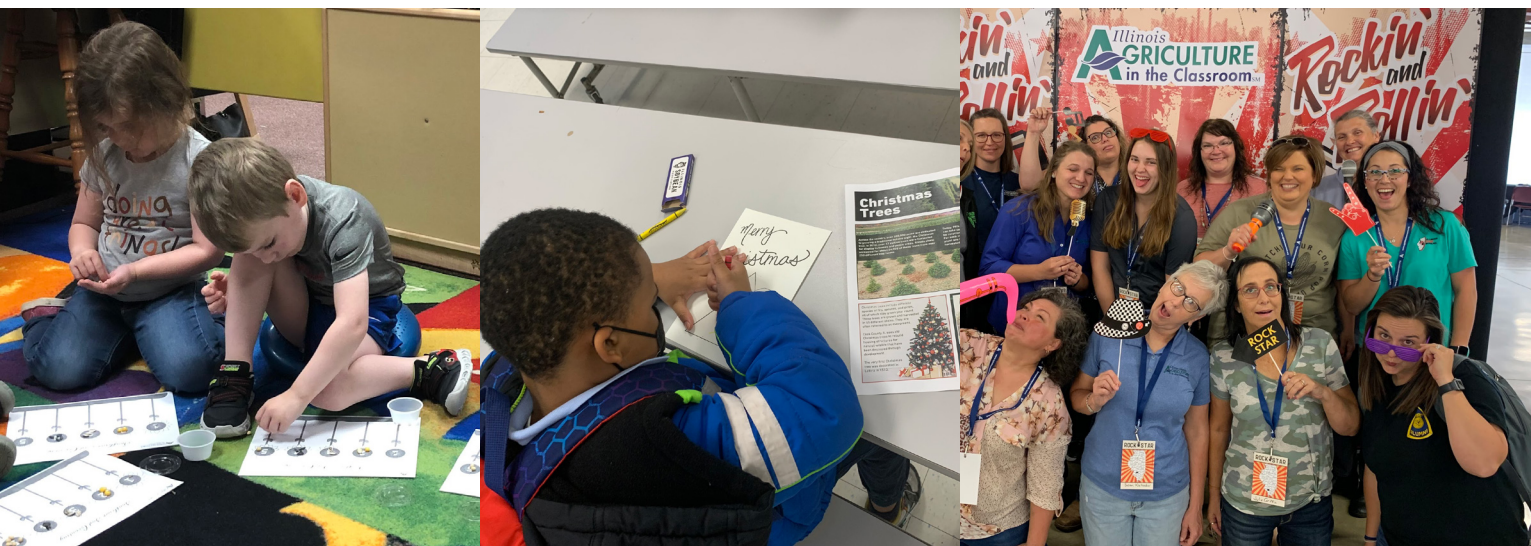
9 Stand-Alone Middle School Chapters

1,135 FFA Members in Grades 7-8*

46 FFA Chapters awarding Discovery FFA Degrees to MS Students

14 FFA Chapters where MS Members participated in LDEs

*Includes FFA members from stand-alone middle school programs and combined middle and high school programs.



Ag Ed Line Item Funding by Year



1987-1988

\$48,500

1989

\$1,000,000

1990

\$1,040,000

1991-1993

\$1,040,000

1994-1995

\$1,081,600

1996

\$1,181,600

1997

\$1,299,000

1998

\$1,429,700

1999

\$1,500,000

2000-2001

\$2,000,000

2002

\$1,950,000

2003-2005

\$1,881,200

2006

\$2,381,200

2007-2008

\$2,881,200

2009

\$3,381,200

2010

\$3,043,100

2011

\$1,947,600

2012-2014

\$1,800,000

2015

\$1,759,900

2016-2017

\$1,800,000

2018-2022

\$5,000,000

2023

\$7,050,000

353 Programs in SY 2019-20

355 Programs in SY 2020-21

359 Programs in SY 2021-22

19 Average AFNR Class Size

57 Programs with Two or More Teachers

65 Programs with College Articulation Agreements

109 Programs with Dual Credit AFNR Courses

100% Programs that Utilize Illinois Core AFNR Curriculum

223 Programs with Advisory Councils

226 Programs with Alumni Group

129 Programs with AFNR Courses in Grades 5-8

74% (-3%) Programs offering Science Credit

39% (+2%) Programs offering Consumer Education Credit

8% (+3%) Programs offering Math Credit

5% (+3%) Programs offering Social Studies Credit

6% (+4%) Programs offering Language Arts Credit

81% with Mechanics Facilities

70% with >10 Computers/Laptops

75% with a Greenhouse

50% with Land/Plant Facilities

89% with 1:1 School Technology

49% with Instructional Landscaping

37% with a Garden

28% with Agriscience Facilities

31% with Aquaculture Facilities

28% with Small Animal/Veterinary Science Facilities

19% with Food Science Facilities

14% with a Nursery

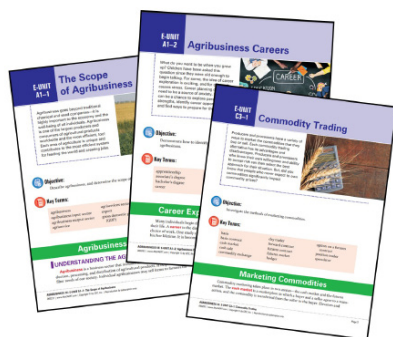
7% with Large Animal Facilities



Illinois Core Curriculum for AFNR

The Illinois Core Curriculum for AFNR is free and accessible to Illinois teachers and administrators at www.ilaged.org. Curriculum libraries are complete, with full lesson plans aligned to Illinois Learning Standards. Each lesson includes a digital textbook (eUnit), presentation slides, related labs and activities, and assessments.

11 Number of Curriculum Libraries
834 Lessons



Teacher Credentials

Illinois teachers continually seek professional credentials in various AFNR career pathways to enhance learning for their students.

Credentials sought by teachers include:

1. AWS Weld Inspector, Educator, and Welder
2. Anhydrous Ammonia Applicator and Transportation License
3. Briggs and Stratton Small Engine Basic Engine Theory Certification
4. Illinois DNR Hunter Safety Certified Instructor
5. Introduction to OSHA, OSHA 10, and 30
6. Illinois Department of Agriculture Certified Pesticide Applicator
7. SERVSafe Certified Food Handler
8. Unmanned Aerial Vehicle Pilot License

Curriculum for Agricultural Science Education (CASE) in Illinois

CASE is a curriculum and professional development initiative of the National Council for Agricultural Education that is managed by the National Association of Agricultural Educators. CASE courses are developed using elements from pedagogical approaches that are recognized in educational literature. CASE curriculum is available to educators who complete certification through a CASE institute, which is an immersive professional learning experience in a specified course. Illinois teachers have taken on leadership roles within the CASE organization, and many have become certified in CASE curriculum based on local program needs.



CASE Curriculum and Number of IL Teachers Certified	
Agriculture Business Foundations 93	
Introduction to AFNR 77	
Agriculture Science-Animals 45	
Agriculture Science-Plants 43	
Agriculture Power & Technology 15	
AgXplore Middle Schools 15	
Natural Resources & Ecology 11	
Food Science & Safety 10	
Mechanical Systems in Agriculture 6	
Agriculture Research & Development 4	
Environmental Science Issues 1	
Technology Applications in Agriculture 1	
Animal & Plant Biotechnology 0	

Illinois AFNR teachers are eligible to become members in Illinois' premier agriculture teacher organization – the Illinois Association of Vocational Agriculture Teachers (IAVAT). **IAVAT offers professional learning, teacher leadership, and advocacy for agricultural education.**

Teachers are professionals, and membership in IAVAT has significant returns on investment. In addition to teacher benefits, students of teacher-members are eligible for discounted registration costs for in state-level competitive events aligned to agricultural careers. Dues for membership are often covered by the members' schools because of this benefit.



Demographics of IL AFNR Teachers Total Number of Agriculture Teachers in Illinois 455, 2.5% increase from FY 2022	
Male	43%
Female	57%
Didn't Grow Up on a Farm	60%
Member of IAVAT	82%
Under Age 30	36%
Over Age 50	17%
Early Career (Less than five years)	42%
Late Career (More than 25 years)	10%

Teacher Licensure Demographics

Teachers in Illinois are licensed to teach AFNR in three main ways. Traditional licensure through an approved university teacher preparation program results in a Professional Educator License (PEL). Alternative means of licensure includes seeking an Educator License with Stipulations (ELS), which requires 60 college credit hours and 2,000 hours of professional experience in AFNR. Another alternative means of licensure includes seeking a CTE-Provisional (CTEP), which requires 8,000 hours of professional experience in AFNR.

Number of Teachers with Professional Educator License: **78%**

Number of Teachers with Educator License with Stipulations: **22%**

Teacher Salaries

Average Teacher Salary in FY 2022: **\$60,873.56 (11.1% increase from FY 2021)**

Average Starting Teacher Salary in FY 2022: **\$49,068 (2.7% increase from FY 2021)**

Building Illinois' AFNR Teaching Corps

Agricultural education in Illinois benefits from a growing, diverse corps of professional educators. To continue to grow the number and diversity of AFNR teachers, Illinois' Team Ag Ed is implementing several initiatives. The Growing Agriculture Science Teachers (GAST) Grant for universities and colleges distributes annual funds to empower students to major in agriscience education. The Joint Board of Directors (IAVAT and FFA) oversees a statewide diversity and inclusion task force to develop initiatives to increase access to agricultural education among diverse students. FCAE initiated a pilot program for school districts to start Minorities in Agriculture, Natural Resources, and Related Sciences (MANRRS) junior chapters at Illinois high schools. FCAE and the IAVAT Recruitment and Retention Committee implement annual initiatives to increase students majoring in agricultural education.

Outstanding Educators





The Illinois Association of Vocational Agriculture Teachers is proud to partner with Nationwide Insurance, Illinois Association FFA, Farm Credit Illinois, and Compeer Financial to offer the **Golden Owl Award**.

The Golden Owl Award® allows these organizations to also extend their support to agricultural educators who devote countless hours – and often their own resources – to positively impact the lives of their students. The Golden Owl Award program allows students, fellow teachers, and other supporters to nominate their favorite agricultural teacher and summarize what makes them the best in their state. Nominees can win the distinction of being their state's Agricultural Educator of the Year.

Kent Weber was chosen as the 2022 Illinois Agricultural Educator of the Year for his extraordinary work as an agriculture teacher and FFA advisor at Seneca Township High School. One colleague describes him, "When you look at his success in and out of the classroom over the years, you will find nobody better. As he has said in the past, 'If an ag teacher is getting it done in the classroom, then the FFA success will follow.' ... He is there for all teachers and students, and really can't be beat." Congratulations, Mr. Weber!

District I Winner

Caseelynn Johnston, Bureau Valley

District II Winner

Kent Weber, Seneca

District III Winner

Wyatt McGrew, Macomb

District IV Winner

Mike White, Paxton-Buckley-Loda

District V Winner

Mark Steber, Richland County - Olney



Instructors of agriculture at Illinois' **community colleges** and **universities** are eligible for membership in the **Illinois Association of Community College Agriculture Instructors (IACCAI)**. IACCAI **provides members** with opportunities for **professional learning, networking,** and **advocacy** for community college agricultural education programs.



Community College Enrollment Data

Total Enrollment	3,088 (4.5%↓)
Male	1,326 (43%)
Female	1,736 (51%)
Gender Withheld	26 (0.8%)
Transfer Program	755 (24%)
Associate in Applied Science Program	1,604 (52%)
Certificate Program	729 (24%)

Community College Data

Programs in AFNR	29
Full-Time Faculty in AFNR	91
Part-Time Faculty in AFNR	109
Average Full-Time Salary	\$70,143
Average Faculty Age	50

Early College Credit Data

Students Offered Articulated Credit in FY 2022	286
Students Received Dual Credit in FY 2022	590



College Programs

The **Professional Agricultural Students (PAS)** organization prepares students from two- and four-year colleges for the workplace by **building student skills** through **annual competitions** and **real-life learning** applications.



Public Speaking	Name and College	
Prepared Public Speaking	Lila Sloan, Highland Community	
Impromptu Speaking	Liam Graham, JJC	
Special Events	Individual and College	Team
Agribusiness Sales	Madeline-Rose Mudge, IVCC	N/A
Agricultural Education	Anna Maleske, LLC	N/A
Beef Cattle	Careson Deppe, ICC	LLC
Crop	Clayton Walch, LLCC	LLCC
Dairy	Ben Harman, SIUC	SIUC
Equine	Joshua Cruz, IVCC	Kaskaskia
Floriculture	Sarah Weber, LLC	LLC
Landscape Horticulture	Sarah Weber, LLC	LLC
Overall Livestock	Cole Murphy, LLC	ICC
Precision Agriculture	Clara Hodel, ICC	LLC
Sheep	Kyla Menne, JJC	ICC
Soil	Clayton Walch, LLCC	ICC
Swine	Conner Smoc, LLC	JJC
College Bowl	N/A	JJC

Employment Interview State Winners

Agricultural Equipment Service	Isaac Orns, ICC
Agribusiness Administration	Kylie Schakel, LLCC
Agricultural Education	Kaitlyn Kane, WIU
Agricultural Sales	Carson Deppe, ICC
Crop Production	Fuller Anderson, LLCC
Dairy Production	Ryan Michael, ICC
Feeds and Animal Health	Taylor Biddle, ICC
Fertilizers and Agricultural Chemicals	Clayton Walch, LLCC
Forestry and Natural Resources	Luke Adams, LLCC
Floriculture	Luke Jesgarz, WIU
Fruit and Vegetable Production	Ellie Ferretti, ICC
Landscaping and Nursery	Elizabeth Lee, LLCC
Livestock Production	Carson Lobdell, LLCC

Career Planning		
Agribusiness Management & Marketing Systems	Highland	Anna Johnson
Agricultural Education Systems	Highland	Alyssa Miller
Agricultural Processing & Biotechnology	Kaskaskia	Brooke Thompkins
Ruminant Animal Systems Progress	Kaskaskia	Faith Prather

14 PAS Chapters
153 PAS Members

PAS Student Officers **President**

Collin White, Illinois College

1st VP

Kylie Schakel, Lincoln Land

2nd VP

Anna Johnson, Highland Community

3rd VP

Luke Adams, Lincoln Land



Enrollment Data by University	
University of Illinois at Urbana Champaign	2,820
Southern Illinois University Carbondale	446
Illinois State University	392
Loyola University Chicago	422
Western Illinois University	392
Illinois College	43
Greenville University	14

Additional Enrollment Data	
Freshman Students	950
Transfer Students	369
University Faculty	280
Graduate Students	374



Illinois State University students studying agricultural education celebrate National Teach Ag Day with group photos at Hancock Stadium. The National #TeachAg Day celebration took place on September 15, 2022. National #TeachAg Day is designed to encourage others to teach school-based agriculture and recognize the important role that agriculture teachers play in our schools and communities

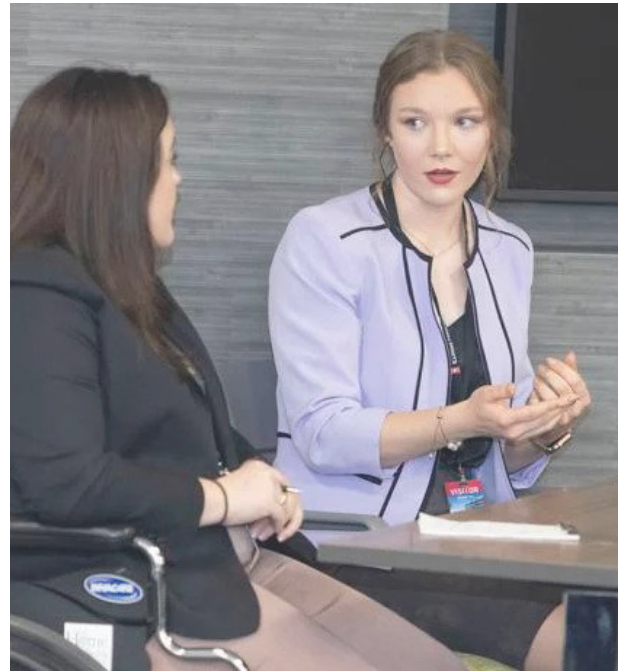
University Programs

Collegiate Farm Bureau provides involvement **opportunities** for students interested in agriculture at **12 chapters throughout Illinois**. The purpose of the **Collegiate Farm Bureau program** is to **bridge the gap** between participation in high school agriculture programs, such as 4-H and FFA, and future involvement as an Illinois Farm Bureau member. Collegiate members are offered **plentiful opportunities** for **leadership**, **professional development**, and **networking** through experiences in **agriculture education, legislation, advocacy, and community service**.

Miriam Hoffman

Discussion Meet Winner 2022

Miriam Hoffman, Southern Illinois University Carbondale, is the state winner for Illinois' collegiate discussion meet. This competition is evaluated on an exchange of ideas and information on a pre-determined topic. Participants build basic discussion skills, develop a keen understanding of important agricultural issues, and explore how groups can pool knowledge to reach consensus and solve problems.



2022 COLLEGIATE DISCUSSION MEET

congratulations!



STATE WINNER:

MIRIAM HOFFMAN

SOUTHERN ILLINOIS UNIVERSITY
CARBONDALE



RUNNER UP:

EMMA KUHNS

UNIVERSITY OF ILLINOIS

HONORABLE MENTIONS:



KYLIE SCHAKEL

LINCOLN LAND
COMMUNITY COLLEGE



KEELY WIXTED

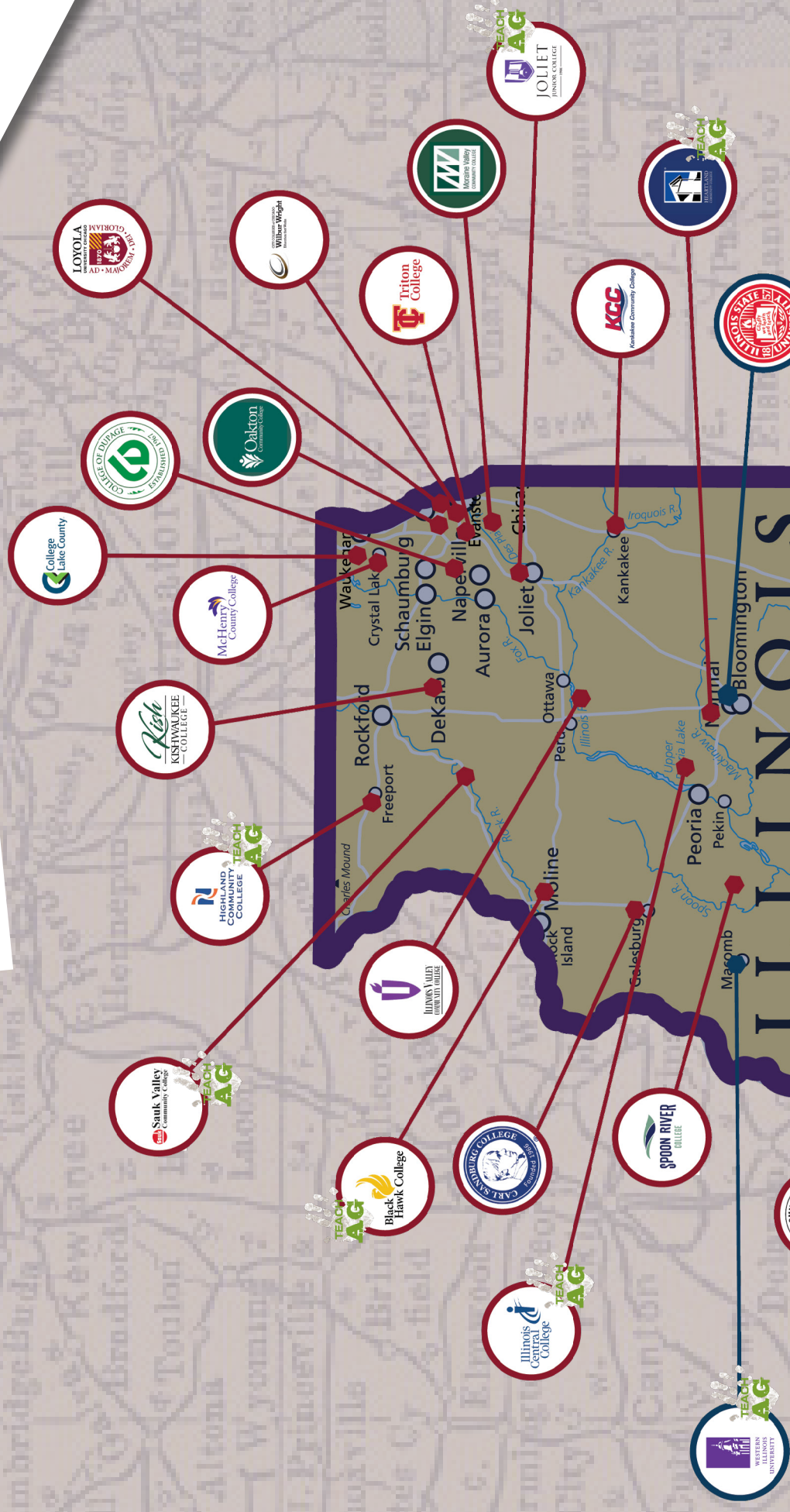
JOLIET JUNIOR COLLEGE



Chapters

Black Hawk College – East Campus, Galva
Highland Community College, Freeport
Illinois Central College, East Peoria
Illinois State University, Normal
Joliet Junior College, Joliet
Kaskaskia College, Centralia

Lake Land College, Mattoon
Lincoln Land Community College, Springfield
Southern Illinois University, Carbondale
University of Illinois, Urbana-Champaign
Wabash Valley College, Mount Carmel
Western Illinois University, Macomb



Illinois FFA EDI Task Force

Illinois FFA Equity, Diversity, and Inclusion Task Force is a group formally organized in the Fall of 2020 with the purpose of focusing on the sense of belonging within Illinois FFA and continuing to focus on making events and activities within FFA engaging for all of our members. The Illinois FFA Equity, Diversity, and Inclusion Task Force has two subcommittees, consisting of Breaking Down Barriers and Education and Advocacy. **Breaking Down Barriers** will focus on the policies, procedures, and logistical barriers to access and equity within Illinois Agricultural Education. Also, this subcommittee will look at each event/conference for what content it contains and how it is or could be more inclusive and valuing all FFA members. **Education and Advocacy** will research and provide recommendations for stakeholder learning opportunities. This subcommittee will provide workshops and professional development opportunities to teachers and FFA members.

Both sub committees worked together to coordinate efforts at the **94th Annual Illinois FFA State Convention** developing the **Cultivating Conversations** room for FFA members to experience. In the Cultivating Conversations Room, FFA members can **discover opportunities** to **enhance** their **personal growth** and have authentic conversations with other FFA members, all the while **embracing differences** and **discovering similarities**. It was created with the purpose of bringing members together through **kindness, empathy** and **love** for one another. There were **four Engagement Areas**:

FFA members shared 230 Be The Change Ideas, as well as 23 FFA Chapters signed up for the Chapter Exchange Signups, while 43 Unique Chapters Checked In. FFA members on the Task Force recorded 80 conversations starters, where a unique conversation was generated by a group of members who were participating in the Conversation Corner. A unique conversation is one that was started with a prompt provided by the group and the conversation was unique to that group and not mirrored by another group with the same prompt. Students were greeted and given a task card to guide them through the room. Upon visiting each area and receiving a stamp they were given a silicone bracelet with the message: 'Embrace Differences - Discover Similarities'.

Other notable accomplishments of this committee include:

- 3** teacher-oriented professional development workshops on equity, diversity, and inclusion
- 105** unique teachers engaged in professional learning opportunities focused on EDI
- 12** meetings of the EDI Task Force throughout the year
- 230** different students engaged in EDI focused activities at State FFA Convention



Junior MANRRS Chapters

Minorities in Agriculture, Natural Resources, and Related Sciences (MANRRS) is the leading collegiate organization for underrepresented high school students engaged in AFNR-career oriented academic programs. MANRRS also conducts a Jr. MANRRS program designed to stimulate interest in science, technology, engineering, agricultural, and mathematics fields (STEAM). Illinois Agricultural Education has worked to grow Jr. MANRRS in Illinois over the past year.

Other notable accomplishments of this committee include:

- 7** Jr. MANRRS Chapters across Illinois reaching from Carbondale to Chicago
- 271** unique Jr. MANRRS members in Illinois (most of which are concurrently FFA members)
- Recruitment exhibit at the National Jr. MANRRS Conference finding future Agriculture Teachers
- Inaugural Illinois Jr. MANRRS Institute at the University of Illinois at Chicago

Be the
Change

NFA
Spotlight

Conversation
Corner

Discovering
Similarities



Illinois State Board of Education (ISBE) is the state agency responsible for preK-12 education, including career and technical education. Principal consultants serve in a supervisory, administrative capacity related to program approval, funding, and regulatory requirements.

Board Chair, Dr. Steven Isoye
State Superintendent, Dr. Carmen Ayala



University Council consists of the agricultural teacher education faculty from the five Illinois universities offering teacher education programs in agriculture, ISBE, FCAE, FFA, and IAVAT. The focus of this group is to maintain high-quality preservice agricultural education programs and to identify research priorities.

Chair, Dr. Jay Solomonson



Illinois Department of Agriculture is the state agency responsible for advocating for Illinois' agricultural industry and providing the necessary regulatory functions to benefit consumers, agriculturalists, and the state's natural resources. The agency also promotes agribusiness in Illinois and throughout the world.

Director, Jerry Costello II



Illinois Association of Community College Agriculture Instructors is a professional organization for postsecondary agricultural education teachers at all levels.

President, Justin Ebert



Illinois Committee for Agricultural Education is a 13-member committee established by legislation and appointed by the Governor to advise both the Governor and State Board of Education concerning agricultural education for K-12 students.

Chair, Kevin Daugherty



Illinois Professional Agriculture Students organization is a career and technical student organization for students enrolled in agricultural programs at the postsecondary level. PAS provides students with professional development opportunities, helping students get an edge in today's job market.

President, Collin White



Illinois Leadership Council for Agricultural Education is a voluntary, grassroots agricultural industry group focused on the expansion and improvement of agricultural education programs at all levels. ILCAE is primarily an advocacy group focused on legislation that impacts agricultural education.

Chair, Allyn Buhrow



Illinois Association of Vocational Agriculture Teachers is a grassroots professional organization for agriculture, food, and natural resource education teachers at all levels.

President, Donna Page



Illinois Farm Bureau is a grassroots, statewide organization of farmers and agricultural professionals dedicated to enhancing the people, progress, and pride of Illinois and its farming community.

President, Richard Guebert, Jr.



Illinois Association FFA is a career and technical student organization for students enrolled in agricultural education programs at the middle, high school, and collegiate levels. This organization promotes premier leadership, personal growth, and career success for all agricultural education student members.

President, Rachel Hood



Facilitating Coordination in Agricultural Education (FCAE) is a state project administered through the ISBE in cooperation with and advised by the Illinois Committee for Agricultural Education. FCAE addresses the aims of Public Act 84-1452 involving the implementation of identified goals for improving education in and about agriculture in Illinois.

Coordinator, Dean Dittmar



Illinois FFA Alumni Association supports and promotes the FFA organization and its activities and agricultural education at every level. The focus of the association is the local chapter affiliate.

President, Steve Yandell



Illinois Agriculture in the Classroom program combines the efforts of the Illinois Farm Bureau, FCAE, University of Illinois Extension, Association of Illinois Soil and Water Conservation Districts, Illinois Agricultural Commodity organizations, various agribusinesses, and others to provide agricultural literacy for all students at level preK-8. Education

Director, Kevin Daugherty



Illinois Foundation FFA is a foundation established to receive and disburse funds to support quality agricultural education programs and FFA chapters across Illinois.

Chair, Joe Webel

