

# INITIATE



# 2021

Illinois Agriculture,  
Food, and Natural Resources  
Education Report

Agricultural Education is delivered through **three** interconnected **components**.

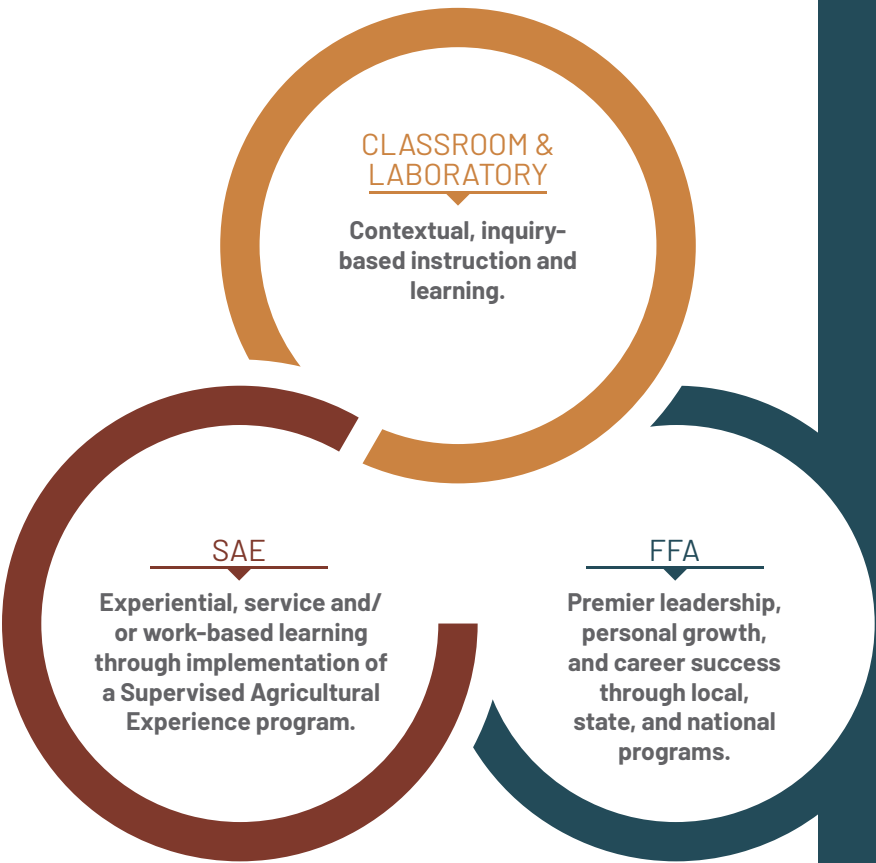


table of contents

Grant Programs .....4-5  
Historical Legislation..... 6-7  
Leaders in Advocacy.....8-9  
We Need Teachers.....10-11  
Work-Based Learning..... 12-13  
Career Development..... 14-16  
Premier Leadership in FFA ..... 17-19  
Community Connections ..... 20-21  
Agricultural Literacy .....22-23  
Agricultural Education.....24-25  
Outstanding Educators.....26-27  
Colleges and Universities .....28-31



Agricultural education programs in Illinois public schools are supported by **local, state, and federal** funding opportunities.

State funding includes specialized funding from the Agricultural Education line item in the State Board of Education’s annual budget. This line item funded five unique grant programs in fiscal year 2021, including the Teacher Three Circle Grant program and incentive funding for programs in Grades 5-12. The Teacher Three Circle Grant program partners with local school districts to extend agricultural education teacher contracts to 12 months. Incentive Funds are distributed directly to districts based on annually published program quality indicators and can be spent on new equipment, curricular resources, professional development, and student services.

State funding for agricultural education also includes the Career and Technical Education-Improvement (CTEI) fund. CTEI funds and federal Perkins funds are distributed through Illinois’ Education for Employment (EFE) systems. EFE systems are consortiums of school districts that partner to strengthen CTE opportunities in their region. Each EFE system is managed by a director and governed by a Board of Control composed of district superintendents. Agricultural education programs, which are a hallmark of career and technical education at the local, state, and national levels, are supported through these systems in a variety of ways.

**38,076**  
FY 2021 Ag Ed Enrollment, Duplicated (8%↓)

**32,656**  
FY 2021 Ag Ed Enrollment, Unduplicated (7%↓)  
32,442 Public, 214 Private

**10,536**  
Calendar Year 2021 SAE Participation (12%↓)  
32% of students with SAE Projects

**15,517**  
Calendar Year 2021 SAE Participation  
Unique SAE projects, (14%↓)

**\$13,735,092**  
Calendar Year 2021 SAE Earnings (2%↓)

**20,583**  
FY 2021 FFA Membership (1%↓)

**Agriculture in the Classroom (AITC) Data**  
**78** AITC Coalitions  
**463,642** PreK-12 Students  
**\$1,771,047** State and Local Funds Invested in AITC

**Agricultural Education Program Data**  
**355** Agricultural Education Programs  
**77%** Offering AFNR as Science Credit

**Ag Ed Teacher Data**  
**455** Agricultural Education Teachers  
**2.5%** increase from FY 2020  
**279** Teachers in Three Circle Grant

**FCAE Program Data**  
**682** Professional Development Hours  
**2** Graduate Courses Offered  
**710** Onsite or Virtual Program Visits  
**2,736** Students Reached through Career Presentations  
**80** Teaching Vacancies Filled

FY21 Line Item Breakdown	
Three Circle Grant	<b>\$2,549,710</b>
Incentive Funding Grant	<b>\$1,030,290</b>
University Incentive	<b>\$40,000</b>
GAST	<b>\$300,000</b>
FCAE	<b>\$1,080,000</b>
TOTAL	<b>\$5,000,000</b>

Which role do you serve for Agricultural Education?  
These pages are for you!

- Legislative Leader 3-9
- Industry Friend 8-13
- Aspiring Student 12-21
- Community Supporter 18-23
- Local Educator 22-31







**Teacher Three Circle Grants**  
Three Circle grants support implementation of the Three Circle Model of agricultural education by working with Local Education Agencies (school districts and career centers) to compensate teachers for extended working time outside of their regular duties. Teachers must document 400 additional working hours on FFA, SAE, curricular, and professional learning.

**\$2,549,710** Total FY 2021 Allocation  
**279** Number of Participating Teachers  
**229** Number of Participating Local Education Agencies



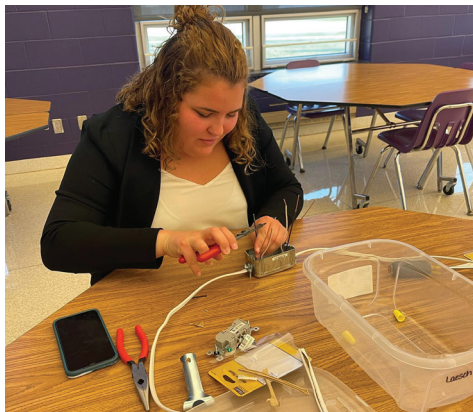
**Incentive Funding for Programs in Grades 5-12**  
Incentive funds support local agricultural education programs for Grades 5-12. Funding can be used for a variety of purposes based on the needs of the local program. Allocations are based on the achievement of program quality indicators each year. Quality indicators address all aspects of school-based agricultural education, including teacher qualifications, student services, courses offered, facility and technology improvements, work-based learning integration, student leadership, and other FFA opportunities.

**\$1,030,290** Total FY 2021 Allocation  
**\$23.75** per Quality Indicator  
**343** Participating Local Education Agencies



**Incentive Funding for Teacher Preparation Programs**  
Incentive funds support agricultural education teacher preparation programs at public universities. Funding can be used for a variety of purposes based on the needs of the program and preservice teachers. Allocations are based on the achievement of program quality indicators each year. Quality indicators address all aspects of teacher preparation programs, including teacher readiness, academic advising, course content, preparation for licensure, and comprehensive field experiences offered to preservice teachers.

**\$40,000** Total FY 2021 Allocation  
**\$104** per Quality Indicator  
**4** Participating Universities



**Growing Agricultural Science Teachers**  
Growing Agricultural Science Teachers (GAST) funds are given to colleges and universities offering an agricultural education program of study to include the Introduction to Agricultural Education course (AGED 100) articulated across the state. Funds support initiatives to recruit, develop, and retain agricultural education teachers. The program has four main objectives — recruitment and retention, development of preservice teachers, professional learning for early career teachers, and professional learning for teacher educators.

**\$300,000** Total FY 2021 Allocation  
**8** Participating Colleges  
**150** Preservice Teachers Impacted

## Grant Programs

### Facilitating Coordination in Agricultural Education



Dean Dittmar, State Coordinator



John Heiser, District I Program Advisor



Luke Allen, District II Program Advisor



Jennifer Waters, District III Program Advisor



Megan Coy, District IV Program Advisor



Casey Bolin, District V Program Advisor

### Illinois FFA Center



Mindy Bunselmeyer, Executive Director



John Edgar, Associate Director



Andrew T. Klein, Principal Consultant

### ISBE



Dr. Sheila Rowe, Principal Consultant

ISBE works with the **Illinois Committee for Agricultural Education** and the **Illinois Leadership Council for Agricultural Education** to administer a statewide program of **agricultural education**.

The Facilitating Coordination in Agricultural Education (FCAE) project coordinates these efforts as they relate to three main purposes — curriculum development, articulating agricultural education across Illinois public schools, and consumer education outreach initiatives.

### FCAE Allocation: \$1,080,000

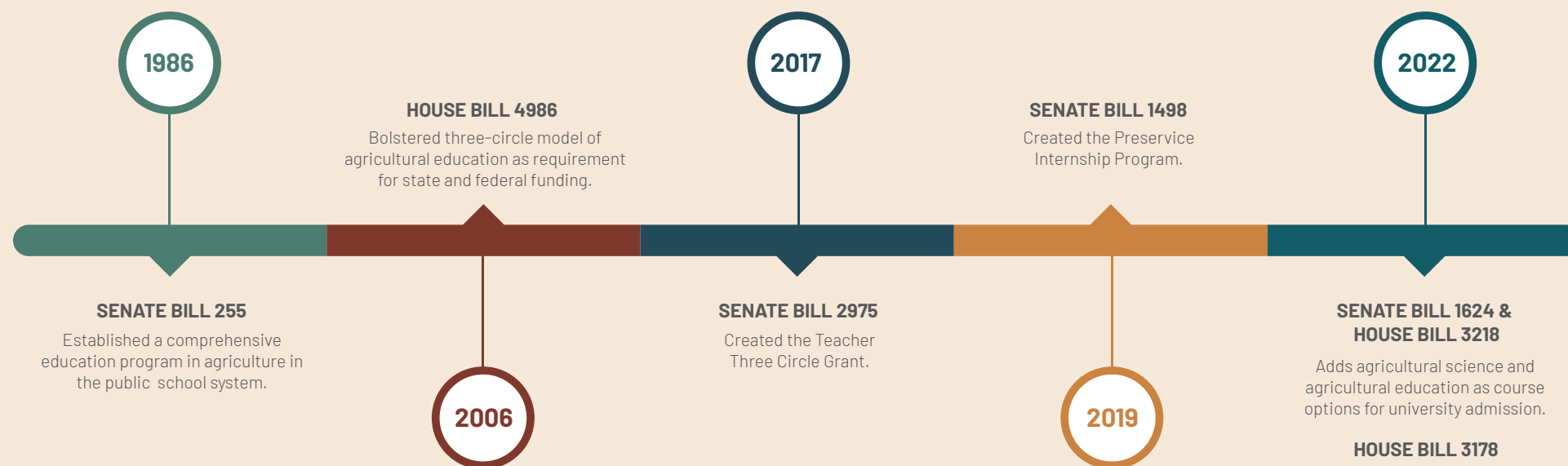
<b>\$</b> <b>\$792,806</b> Local Program Support	<b>\$</b> <b>\$91,705</b> Work-based Learning Support	<b>\$</b> <b>\$60,000</b> Agricultural Literacy	<b>\$</b> <b>\$26,500</b> FFA Center Services
<b>\$</b> <b>\$19,984</b> Teacher Professional Development	<b>\$</b> <b>\$17,483</b> Indirect Costs	<b>\$</b> <b>\$12,500</b> MANRRS Pilot Project	
<b>\$</b> <b>\$49,285</b> Website Management and Publications	<b>\$</b> <b>\$7,212</b> Curricular Resource Management	<b>\$</b> <b>\$2,525</b> Conference Exhibits	

**FCAE, the Illinois FFA Center, and ISBE** work together to **improve** all aspects of **agricultural education in Illinois**.

- FCAE coordinates the statewide program of agricultural education through local program support, teacher professional development, and agricultural literacy initiatives.
- Illinois FFA Center coordinates professional services for all agricultural education-related organizations to include the FFA student organization, FFA Foundation, FFA Alumni, Illinois Association of Vocational Agriculture Teachers, Illinois Association of Community College Agriculture Instructors, and Professional Agriculture Students.
- ISBE administers state funding for agricultural education to include the FCAE project.







**Senate Bill 255** passed and was signed into law on September 19, 1986, creating Public Act 84-1452 and Chapter 122, Section 2-3.80 of the Illinois School Code stating: “The General Assembly recognizes that agriculture is the most basic and singularly important industry in the state, that agriculture is of central importance to the welfare and economic stability of the state, and that the maintenance of this vital industry requires a continued source of trained and qualified individuals for employment in agriculture and agribusiness.” SB 255 thereby established a comprehensive education program in agriculture in the public school system — pre-K through adult education — and required that the State Board of Education make this program readily available to school districts.

**House Bill 4986** passed Public Act 84-1452, which amended the Illinois School Code, on January 20, 2006, stating: Provides that a school district that offers a secondary agricultural education program that is eligible for state and federal funding must ensure that, at a minimum, the following are available to its secondary agricultural education students: (1) an instructional sequence of courses approved by the State Board of Education; (2) a state and nationally affiliated FFA Chapter that is integral to instruction and is not treated as an extracurricular activity; and (3) a mechanism for ensuring the involvement of all secondary agricultural education students in formal, Supervised Agricultural Experience activities and programs.

**Senate Bill 2975** passed and was signed into law effective January 1, 2017, creating Public Act 99-826 and Section 2-3.80b of the Illinois School Code. This legislation “created an agriculture education teacher grant program to fund personal services costs for agriculture education teachers in school districts. The grants shall be for the purpose of assisting school districts with paying for personal services costs of agriculture education teachers.” This grant today is known as the Teacher Three Circle Grant.

**Senate Bill 1498** passed and was signed into law effective August 13, 2019, creating Public Act 101-554 and Section 2-3.80d of the Illinois School Code. By this new law, the “State Board of Education must, in consultation with the Board of Higher Education, develop an Agricultural Education Pre-Service Teacher Internship Program, beginning at the secondary education level, for pre-service teaching students.” This program today is known as the Preservice Internship Program.



FFA members meet and thank Governor Pritzker before the signing of Public Act 102-0403.

**Senate Bill 1624 and House Bill 3218** passed and were signed into law effective January 1, 2022, creating Public Act 102-0403. This Public Act amended various Acts relating to the governance of public universities in Illinois. With respect to the high school coursework that a person must satisfactorily complete for university admission, adds agricultural sciences as a course option for the science category and agricultural education as a course option for the electives category.

**House Bill 3178** passed and was signed into law, creating Public Act 102-0463. This Act amended ILCS 5/2-3/80 effectively changes the composition of the Illinois Committee for Agricultural Education.

The Agricultural Education line item was fully funded in fiscal year 2021 at \$5 million. All Agricultural Education line item funds were allocated to the six grant programs outlined in Part 75 of the administrative rules for the Illinois State Board of Education.



## Historical Legislation



The **Illinois Committee for Agricultural Education (ICAE)** is a group of professionals **tasked with advising the Illinois State Board of Education on agricultural education.** Pursuant to Illinois School Code (105 ILCS 5/2-3.80), the 13-member committee is composed of members representing a variety of agricultural education roles.



Dr. Amy Leman  
Chair (Adult Education)  
University of Illinois

- Brad Pilcher, Vice Chair (FFA Representative)  
Bayer Crop Science
- Kevin Daugherty (Agricultural Literacy)  
Illinois Farm Bureau
- Kaizad Irani (College Agriculture Instructor)  
Parkland College
- Doug Hanson (ILCAE)  
ProHarvest Seeds
- Allyn Buhrow (ILCAE)  
Farmer, Pioneer Seeds
- Aimee Shasteen (ILCAE)  
Farm Credit Illinois
- Kim Haywood Jr. (ILCAE)  
Lovejoy Technical Academy
- Erika Allen (ILCAE)  
Urban Growers Collective
- Jody Heavner (Secondary Agriculture Teacher)  
Pittsfield High School
- Suzanne Schafer (Secondary Agriculture Teacher)  
Taylorville High School
- Gary Ochs (University Agriculture Instructor)  
University of Illinois

The **Illinois Leadership Council for Agricultural Education (ILCAE)** is a volunteer, grassroots agricultural industry group **focused on the expansion and improvement of agricultural education programs** at all levels. ILCAE is responsible for the vision of agricultural education through the Illinois Agricultural Education Plan.

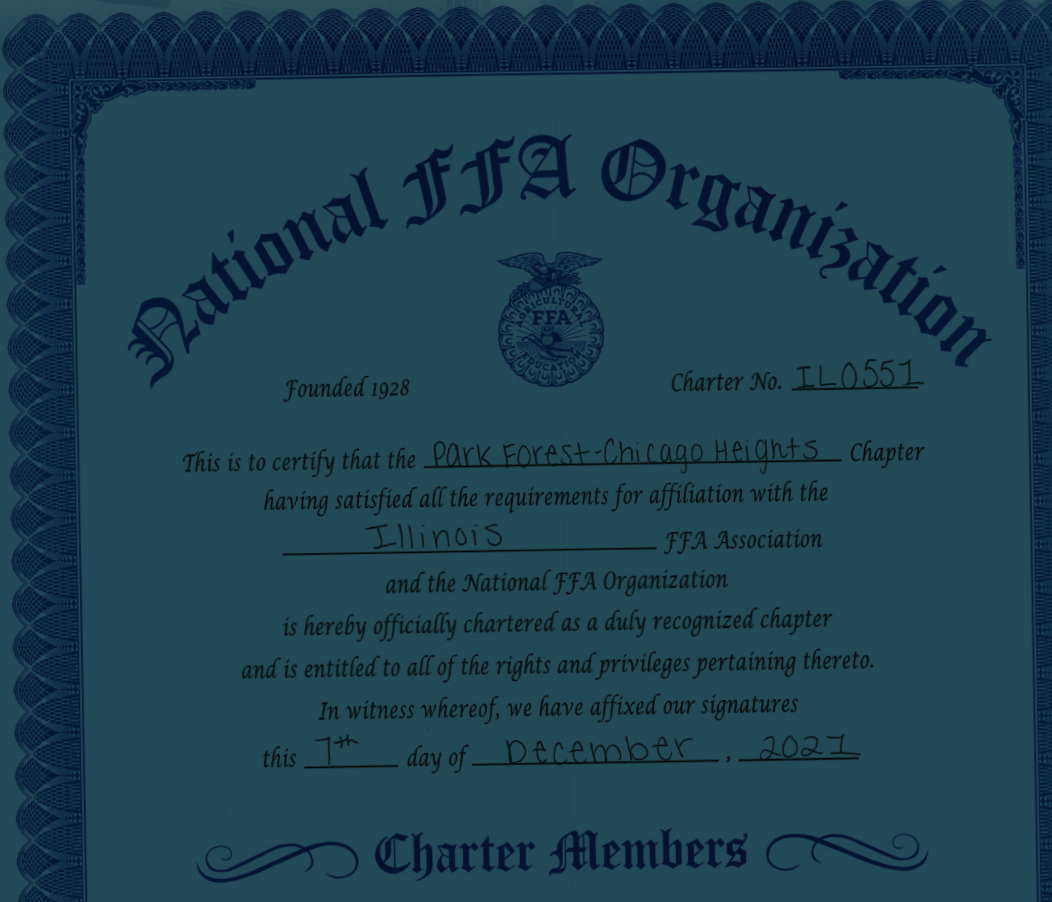


Allyn Buhrow  
Chair  
Farmer, Pioneer Seeds

- |                                                                               |                                                         |
|-------------------------------------------------------------------------------|---------------------------------------------------------|
| Greg Webb, Vice Chair<br>Archer Daniels Midland (ADM)                         | William Kling<br>Attorney, Community Collaborative, LLC |
| Michael Zecher, Secretary<br>Zecher Farms                                     | Mindy McDermott<br>The Climate Corporation              |
| Erika Allen<br>Urban Growers Collective                                       | Don Moffitt<br>Retired State Representative             |
| Dave Cattron<br>Retired Educator                                              | Rod Riech<br>Brandt Consolidated Inc.                   |
| Allen Dietz<br>Retired Educator, Dietz Farms                                  | Karen Schieler<br>Compeer Financial                     |
| Brenda Dismore<br>Tyson Foods                                                 | Aimee Shasteen<br>Farm Credit Illinois                  |
| Jeff Galle<br>Global Pork Production Enterprises                              | Kay Shipman<br>FarmWeek                                 |
| Warren Graeff<br>Midland States Bank                                          | Haley Siergiej<br>Nutrients for Life Foundation         |
| Doug Hanson<br>ProHarvest Seeds                                               | Holly Spangler<br>Prairie Farmer & Farm Progress        |
| Kenny Hartman<br>Glendell Farms LTD                                           | Tyler Strom<br>Illinois Agri-Food Alliance              |
| Kim Haywood Jr.<br>Lovejoy Technical Academy                                  | Dan Swanson<br>Illinois State Legislature               |
| Russel Higgins<br>University of Illinois Extension                            | Cynthia Tucker<br>PepsiCo                               |
| Chris Kendall<br>Peoria Educational Region for Employment Career and Training | Kaitlin Weitekamp<br>John Deere                         |
|                                                                               | Wyatt Williamson<br>Edgar County Farm Bureau            |



The **National FFA Organization** works through State Associations to **endorse and deliver official charters to local schools** when meeting the requirements to start an official FFA chapter. Charters are signed by national and state leaders, as well as the first members of the local chapter who are forever dubbed as charter members.





The **number of openings** for agriculture teachers **exceeds the number of teaching candidates**, so agricultural education is recognized by the Illinois General Assembly as an area of **high staff shortage** (IL110 ILCS 947/65.25). **Aggressive strategies** and **targeted support** are utilized to **recruit, develop, and retain high-quality agriculture teachers** in Illinois public schools.

Fiscal Year	Agricultural Education Job Openings	Graduates in AFNR Teacher Education Programs	Non-traditionally Licensed Teachers Hired in Ag Ed
2019-2020	85	28	23
2020-2021	66	22	14
2021-2022	84	36	21

State Teach Ag Results Program

The State Teach Ag Results (STAR) program is a project of the National Teach Ag Campaign, a teacher recruitment and retention initiative managed by the National Association of Agricultural Educators. STAR provides funds for states to develop sustainable programs to increase the number of agriculture teachers. High school and college students explore becoming an agriculture teacher.

**\$9,514** STAR Dollars in FY 2021  
**65** Preservice Teachers Impacted



Preservice teachers explore floral design on the annual STAR Bus Trip.

Teacher Contract Lengths

**65%** are 40-60 Days Beyond  
**6%** are 31-45 Days Beyond  
**8%** are 16-30 Days Beyond  
**11%** are 01-15 Days Beyond  
**10%** are 0 Days Beyond

Recruitment Activities for High School Students

**40** Students Competing in the Agricultural Education CDE  
**24** Junior Internships with Agricultural Educators  
**1,763** Students Reached through AFNR Career Presentations  
**121** Students Attending ELITE Conference



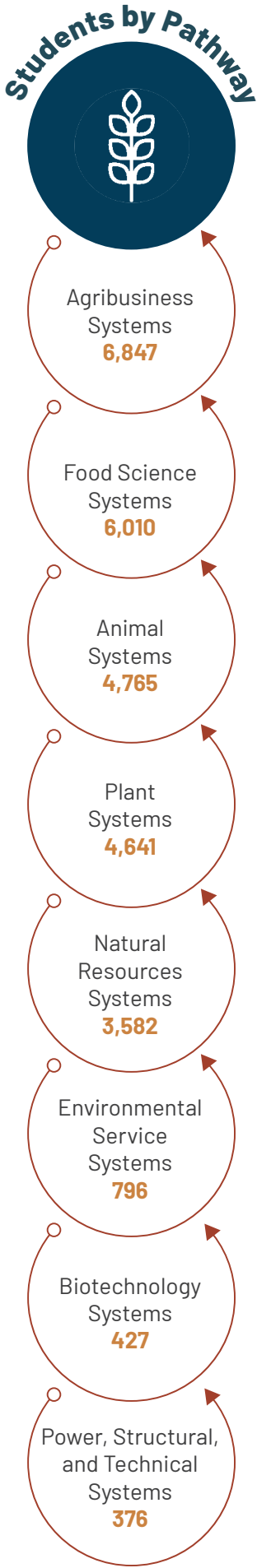
Students considering Agricultural Education as a career meet with college programs at the annual ELITE Conference.

Retention Activities for College Preservice Teachers

**36** Student Teacher Awards at IAVAT Summer Conference  
**23** Participants in IAVAT Student Branch Activities  
**6** College-level Internships with Agricultural Educators

Retention Activities for Current Teachers

**36** Teachers at 1st Year Teachers' Conference  
**19** Teachers at 2nd Year Teachers' Conference  
**1,576** Participants in SBAE Professional Development  
**4** New Teacher Retention Grants from IAA Foundation  
Agricultural Education Eligible for Federal Loan Forgiveness



The **Agricultural, Food and Natural Resources (AFNR) career cluster** is **focused** on the production, processing, marketing, distribution, financing, and development of **agricultural commodities** and **resources**, including food, fiber, wood products, natural resources, horticulture, and other plant and animal products or resources. ISBE recognizes eight unique pathways.



Industry-Recognized Credentials

An industry-recognized credential is a verification of a student's qualification or competence. A third party, such as an organization or employer, issues a credential. Credentials are valued in the labor market and are a validation of knowledge and skill. They can take many forms, including certifications, certificates, and licenses. AFNR programs in Illinois offer many credentials, including:

1. Occupational Safety and Health Administration (OSHA) Credentials
2. Illinois Department of Natural Resources Hunter Safety Certification
3. Illinois Department of Agriculture Pesticide Applicator Certification
4. National Association of Veterinary Technicians in America Certifications

Program Advisory Councils

Quality AFNR programs have close ties with business and industry. These partnerships are critical to ensuring programs meet current occupational needs. Program Advisory Councils, which are required for CTE Programs of Study,

are one of the most effective ways to establish and strengthen these partnerships. An advisory council is a group of stakeholders that may include representatives from local business and industry, school administrators, faculty, staff, and representatives from transfer institutions who advise the institution on the development, implementation, and evaluation of the program. ISBE utilizes the Illinois Committee for Agricultural Education as a statewide advisory council, and local programs are incentivized to implement local advisory councils through the Incentive Funding Grant.

AFNR Model Program of Study

The Illinois Community College Board (ICCB) sponsored the development of Model Programs of Study Guides in crucial industry areas as part of the Illinois State Plan for Strengthening Career and Technical Education for the 21st Century Act (also known as the Perkins V Plan). The AFNR Model Program of Study Guide was developed in consultation and collaboration with the Illinois State Board of Education and other notable AFNR stakeholders.





**Work-Based Learning (WBL)** is **sustained interaction with professionals** in **real workplace settings** or **simulated environments in school** that foster in-depth, **firsthand engagement** with the tasks required for specific AFNR careers.

These tasks are also aligned to relevant AFNR curriculum and instructional standards. In local AFNR programs, WBL is commonly facilitated through Supervised Agricultural Experience (SAE) programs. SAE opportunities are endless and entirely based on exploring students’ passions and career interests. Students will start with a Foundational SAE, then expand to include one or more Immersion SAEs.

**SAE Participation Data**

**10,536** (28%) Students with SAEs (12%↓)  
**15,517** Unique Projects (14%↓)  
**\$13,785,092** SAE Earnings (2%↓)  
**1,465,654** Journal Entries (18%↓)

**Project Types**

**47%** Placement/Internship  
**29%** Entrepreneurship/Business  
**19%** Foundational  
**5%** Research/Agriscience

**Project Levels**

**91%** Individual  
**7%** School-based  
**1%** Service-Learning

**Projects by Pathway**

**35%** Animal Systems  
**16%** Plant Systems  
**7%** Food Products and Processing  
**7%** Agribusiness Systems  
**6%** Power, Structure, and Technical  
**5%** Career Ready Practices  
**2%** Environmental Service  
**2%** Natural Resources  
**1%** Biotechnology Systems

**Work-Based Learning**

**FFA Degrees and Star Awards**

Student members of FFA are recognized through a sequence of awards based on achievement in multiple aspects of the AFNR instructional program, including academic success, leadership roles, and SAE progression. These awards are known as Degrees.

**Discovery Awards**

The Discovery FFA Degree is awarded to members in Grades 7 and 8 at their local chapter banquet each year. Those middle school members receiving their Discovery Degree can also apply for statewide Star Awards in specific project areas. For this year, those went to:

**Star Agribusiness:** Wyatt Arnold, Galatia  
**Star Agricultural Placement:** Lauren Johnson, Eastland  
**Star Farmer:** Wyatt DeAth, Salt Fork

**State Awards**

The State FFA Degree is the highest honor the Illinois Association FFA can bestow on a student. This past year, 521 members were awarded the coveted State FFA Degree. From these awards, outstanding members are recognized as “stars” in their respective project areas. Illinois’ stars in FY 2021 are:  
**Star Agribusiness:** Toby Winans, Taylorville  
**Star Agricultural Placement:** Tyler Gerdes, Breese Central  
**Star Agriscience:** Delana Erbsen, Eastland  
**Star Farmer:** Shana Lueking, Christ Our Rock Lutheran

**National Awards**

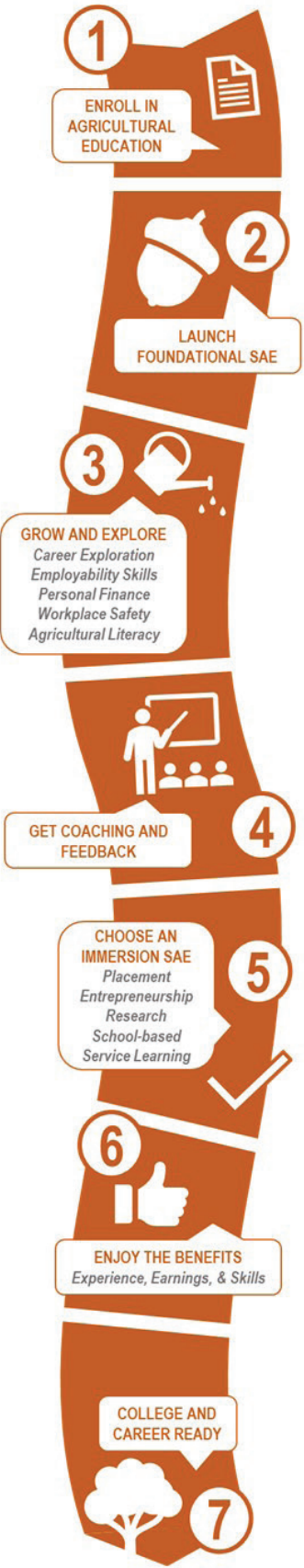
The American FFA Degree is the highest honor the National FFA Organization can bestow on a student. This past year, 134 members from Illinois were awarded the American FFA Degree. From these awards, Illinois selects outstanding members to be considered by National FFA for American Star Awards. Those stars are:  
**Star Agribusiness:** Joey Allison, Cisne  
**Star Agricultural Placement:** Zachary Hebert, Watseka  
**Star Agriscience:** Daniel Vogwill, CHSAS  
**Star Farmer:** Payton Erbsen, Eastland



\*Lizzie Schafer from the Taylorville FFA Chapter was recognized as the national champion in her proficiency award area in 2021.

Proficiency Award Statewide Winners

<b>Agricultural Communications</b>	Brooklyne Luessenheide, Nashville
<b>Agricultural Education</b>	Elaan Bader, Litchfield
<b>Agricultural Mechanics Design and Fabrication</b>	Matt Klingele, Liberty
<b>Agricultural Mechanics Repair and Maintenance – Entrepreneurship</b>	Dawson Boys, Stewardson-Strasburg
<b>Agricultural Mechanics Repair and Maintenance – Placement</b>	Maxwell Griffey, Sycamore
<b>Agricultural Processing</b>	Sam Terneus, Lincolnwood
<b>Agricultural Sales – Entrepreneurship</b>	Emerson Tarr, LeRoy
<b>Agricultural Sales – Placement</b>	Jaton Shaffer, Blue Ridge
<b>Agricultural Services</b>	Toby Winans, Taylorville
<b>Agriscience Research – Animal Systems*</b>	Lizzie Schafer, Taylorville
<b>Agriscience Research – Integrated Systems</b>	Gracie Corso, Taylorville
<b>Agriscience Research – Plant Systems</b>	Christina White, Paxton-Buckley-Loda
<b>Beef Production – Entrepreneurship</b>	Ty Knodle, Nokomis
<b>Beef Production – Placement</b>	Dave Mock, Galva
<b>Dairy Production – Entrepreneurship</b>	Shana Lueking, Christ Our Rock Lutheran
<b>Dairy Production – Placement</b>	Katy Cassan, Marengo
<b>Diversified Agricultural Production</b>	Beau Mumm, Monticello
<b>Diversified Crop Production – Entrepreneurship</b>	Lance DeClerck, Taylorville
<b>Diversified Crop Production – Placement</b>	Jack Beetz, Mendota
<b>Diversified Horticulture</b>	Keil Endress, Midland
<b>Diversified Livestock Production</b>	Lauren Mohr, Normal West
<b>Environmental Science and Natural Resources Management</b>	Miranda Araujo, Seneca
<b>Equine Science – Entrepreneurship</b>	Jada Hamman, Newark
<b>Equine Science – Placement</b>	Olivia Charles, West Carroll
<b>Fiber and Oil Crop Production</b>	Loren Pribble, Goreville
<b>Food Service</b>	Alexandria Cain, ROWVA
<b>Forage Production</b>	Evan White, Midwest Central
<b>Forest Production and Management</b>	Collin Nash, Pittsfield
<b>Fruit Production</b>	Ethan Weidner, Teutopolis
<b>Goat Production</b>	Mason Fricke, Triopia
<b>Grain Production</b>	Logan Bend, Indian Creek
<b>Landscape Management</b>	Carissa Jefferson, Edwards County
<b>Nursery Operations</b>	Joshua Fuller, Canton
<b>Outdoor Recreation</b>	Abby Hoeft, Normal West
<b>Poultry Production</b>	Hunter Mott, Central A&M
<b>Safety</b>	Georgia Vandigo, Scales Mound
<b>Sheep Production</b>	Trace Titus, United
<b>Small Animal Production and Care</b>	Grace Milligan, Cisne
<b>Specialty Animal Production</b>	William Huber, Kaneland
<b>Specialty Crop Production</b>	Ty Steffen, Newark
<b>Swine Production – Entrepreneurship</b>	Annie Johnson, Cambridge
<b>Swine Production – Placement</b>	Zach Kampwerth, Central Breese
<b>Turf Grass Management</b>	Alec Langley, South Central
<b>Vegetable Production</b>	Shannon Flavin, Unity-Tolono
<b>Veterinary Science</b>	McKenna Merritt, Illini West
<b>Wildlife Production and Management</b>	Cameron Pace, Cambridge



**Service-Learning  
State Winner:**  
Libby Larkin, Pontiac  
More on Page 20.





**Career Development Events (CDE)** are team-based challenges for FFA members that focus on **skill development** and **career preparation**. These competitive events develop individual responsibility, foster teamwork, and promote communication while recognizing the value of ethical competition. Members expand their knowledge base by interacting with peers and teachers, as well as business and community leaders, to gain a complete and comprehensive knowledge about specific careers. Events are also aligned to Illinois Learning Standards.



Prairie Central FFA Chapter, National Champions in Agricultural Sales

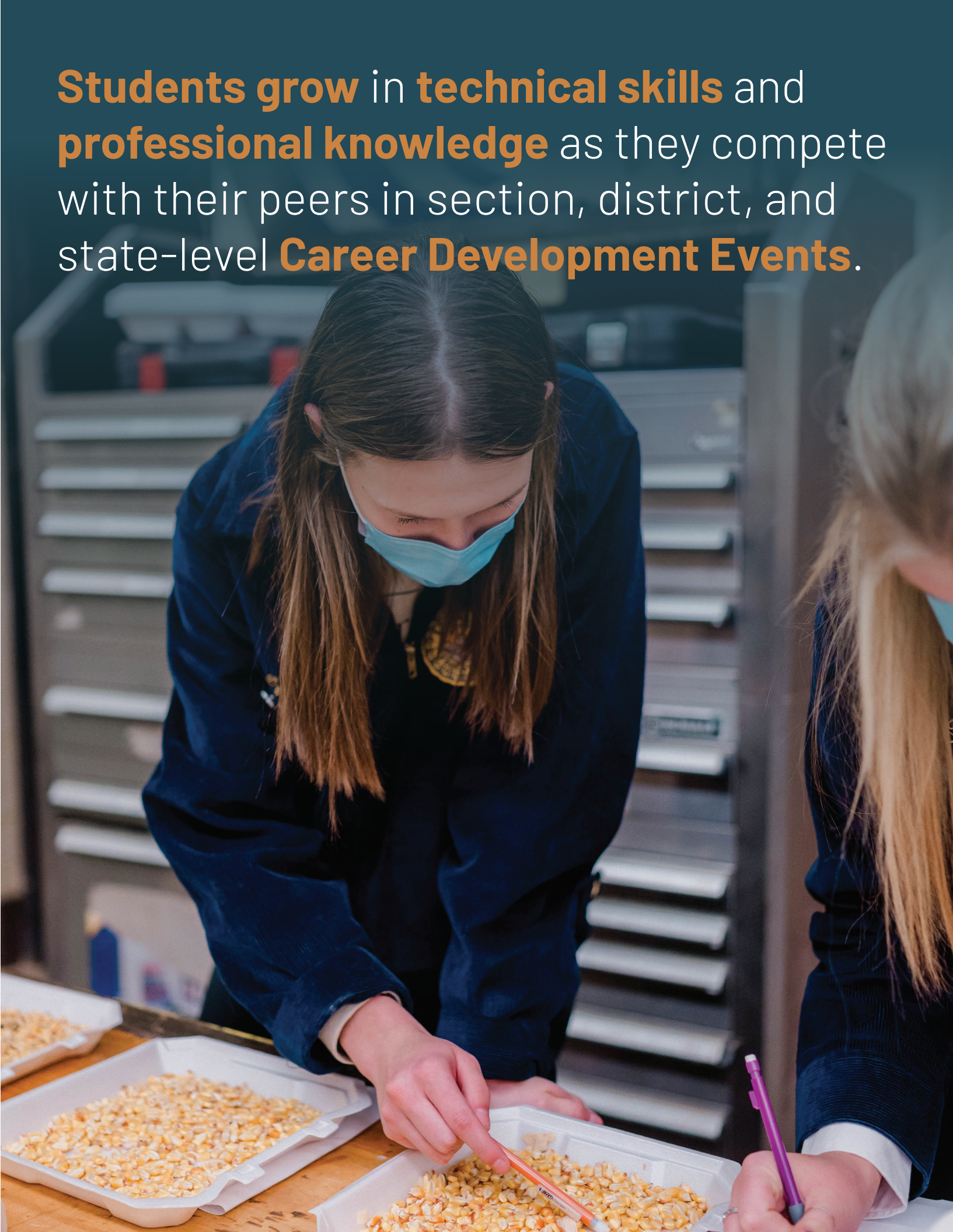


Eastland FFA Chapter, National Champions in Dairy Cattle Evaluation & Management



Prairie Central FFA Chapter, National Champions in Milk Quality & Products

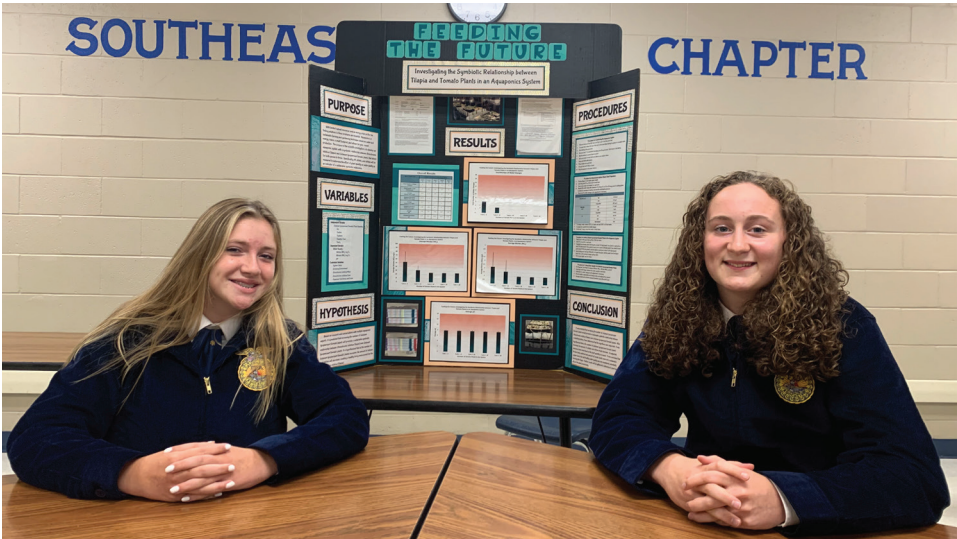
CDE	Participation	State Winner
Agricultural Business Management	19%	Unity-Tolono
Agricultural Communications	3%	Canceled due to COVID-19
Agricultural Education	7%	Madelyn Hubble, Normal
Agricultural Mechanics	14%	Canceled due to COVID-19
Agricultural Sales	30%	Prairie Central
Agronomy	51%	United
Dairy Cattle Evaluation	16%	Non-Reasons: Vandalia Reasons: Eastland Middle School: Carlyle
Dairy Cattle Handlers	2%	Canceled due to COVID-19
Dairy Foods	22%	Canceled due to COVID-19
Food Science and Technology	12%	Somonauk-Leland-Sandwich
Forestry	21%	High School: Midland Middle School: Liberty
Horse Evaluation	45%	Non-Reasons: Rochelle Reasons: Unity-Tolono Middle School: West Prairie
Horticulture	27%	Seneca
Land Use	19%	Canceled due to COVID-19
Livestock Evaluation	44%	Non-Reasons: Macomb Reasons: Normal West
Meat Evaluation and Technology	22%	Prairie Central
Poultry Evaluation	26%	Milford
Quiz Bowl	20%	Brownstown
Veterinary Science	29%	Clifton Central



Students grow in **technical skills** and **professional knowledge** as they compete with their peers in section, district, and state-level **Career Development Events**.



The **Illinois Agriscience Fair** recognizes students who gain **real-world, hands-on experiences in agricultural enterprises**. Students use scientific principles and emerging technologies to solve complex problems related to agriculture, food, and natural resources. The Agriscience Fair is for middle and high school students. Participation begins at the local level and progresses to district, state, and national levels.



Savannah Ramsey and Amanda Stephens, Southeastern FFA Chapter  
National Champions in Division 2 — Environmental Service and Natural Resources



Olivia Shike, Unity-Tolono FFA Chapter National  
Champion in Division 3 — Animal Systems

Project Category	Grades 7-8	Grades 9-10	Grades 11-12
Animal Systems	High Individual: none High Team: Liliana Weese & Gracie Arthur, Southeastern	High Individual: Olivia Shike, Unity-Tolono High Team: Drew Mickey & Jay Bliler, Taylorville	High Individual: Lizzie Schafer, Taylorville High Team: Delana Erbsen & Alyssa Miller, Eastland
Environmental Service and Natural Resource Systems	High Individual: Hailie Heaton, Southeastern High Team: Savannah Ramsey & Amanda Stephens, Southeastern	High Individual: Sara McGehee, Fairfield High Team: Samantha Alvarez & Reagan Green, Central Burlington	High Individual: Kaleia Maxey, Chicago Ag Sciences High Team: Christina White & Maci Kingren, Paxton-Buckley-Loda
Food Products and Processing Systems	High Individual: none High Team: none	High Individual: Olivia Alka, Mt. Carmel High Team: none	High Individual: none High Team: none
Plant Systems	High Individual: none High Team: none	High Individual: Jocelyn Williams, Taylorville High Team: Tucker Winans & Stephen Franklin, Taylorville	High Individual: Isabelle Norris, Taylorville High Team: Kevin Hyder & Rylee Beckel, Cisne
Power, Structural, and Technical Systems	High Individual: none High Team: Anden Akers & Jaren Henry, Southeastern	High Individual: Charles Miller, Cisne High Team: none	High Individual: Elaan Bader, Litchfield High Team: none
Social Systems	High Individual: none High Team: none	High Individual: none High Team: Abby Norris & Abby Erlenbush, Taylorville	High Individual: Tabitha Wagner, Chicago Ag Sciences High Team: Brilyn Lantz & Ani Kerr, Southeastern

I **believe** in **leadership** from ourselves and **respect** from others.



Sidney Stiers of the Williamsfield FFA Chapter won the national Creed Speaking Leadership Development Event at the National FFA Convention in 2021.

<b>Leadership Development in FFA</b> Local AFNR programs develop student leadership through FFA programs at the local, state, and national levels. FFA members focus on skill development through Leadership Development Events (LDE). These competitive events develop individual responsibility, foster teamwork, and promote communication while recognizing the value of ethical competition. Events are also aligned to Illinois Learning Standards.	LDE	Participation	State Winner
	Agricultural Issues	3%	Cisne
	Conduct of Chapter Meetings	11%	Olney
	Creed Speaking (Grade 9 Only)	52% for All Public Speaking	Sidney Stiers, Williamsfield
	Extemporaneous Public Speaking	52% for All Public Speaking	Morgan Mouser, Tri-Valley
	Parliamentary Procedure	23%	Paxton-Buckley-Loda
	Prepared Public Speaking	52% for All Public Speaking	Lizzie Schafer, Taylorville

<b>Leadership Conferences</b> Local programs promote leadership and personal growth through conferences held at the local, state, and national levels. Conferences looked different in 2021 because of pandemic-related restrictions, but despite these challenges members and student leaders came together for team-building and peer networking.	Conference	Audience	Host(s)	Location	Participation
	Greenhand	New Students	LLCC, SIUC, UIUC, WIU	Regional Locations	Regional Events
	Ground Zero	Grades 9-10	State FFA	Virtual	35%
	COLT	Chapter Officers	SIUC	Carbondale	Regional Event
	BUILD	Grades 11-12	ISU	Normal	28%
	STAR	Section Officers	BHC, JJC, JWCC, LLC, and SIUC	Regional Locations	20%
	Premier 20	Student Leaders in FFA and 4-H	Illinois Farm Bureau	Bloomington	2%
	WLC	FFA Members Across the Nation	National FFA	Washington, D.C.	Postponed due to COVID-19



**FFA membership** is an investment in a student's future. **Participation** can be an **uplifting** and **community-building** experience that contributes positively to **personal growth**, including mental and emotional well-being.

In addition to personal gains, FFA membership also builds career skills and professional success for students as they network with industry professionals; explore options for careers; and develop essential skills like public speaking, interviewing, and networking.

FFA also makes a positive difference in communities. Strong chapters are built by strong members, and strong members who come together can have a greater impact on their school and community than they could ever have had independently. These are the primary returns on investing in FFA members – premier leadership, personal growth, and career success. Join your local chapter to reap the full benefits of our wonderful organization!

**The Value of Leadership in FFA**

There are many positive aspects of FFA membership. Ask any former member what they remember most about their time in the FFA, and you will likely get a different answer inspired by their unique experiences. FFA members take ownership in their experiences – all of which develop leadership and teamwork skills. Competitive events, such as public speaking, parliamentary procedure, and agricultural issues, give members a voice in discussing important topics with their local chapter or the agricultural industry. These experiences give members confidence in handling real-world situations by sharing opinions, analyzing problems, or working with a team to make decisions.

Conferences are perhaps the most memorable, especially for new members. Meeting others from different backgrounds and communities teaches students to respect others' ideas and perspectives. Serving as an officer is perhaps the most demanding and rewarding experience for a student. The variety of roles and responsibilities often puts student officers in charge of tasks such as leading meetings, tracking chapter finances, managing public relations, coordinating service projects, and mentoring new students. Through these responsibilities, members develop confidence that you don't often experience through other youth programs, and that is because FFA truly is a student-led organization.

**Student leadership, work ethic, and inspiration** are at the **heart of this organization**, and **all members benefit** from this **system and structure of leadership that is FFA**.



19,177

FY 2019 FFA Members (4%↑)

20,772

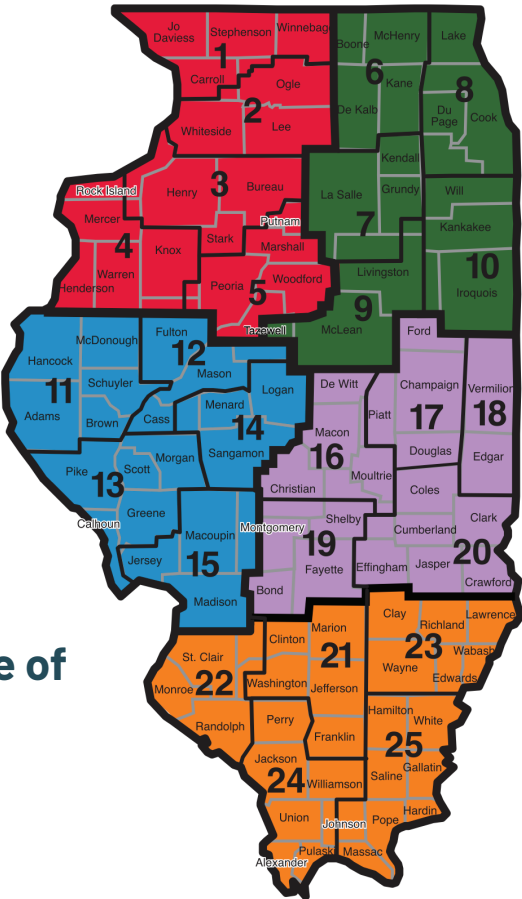
FY 2020 FFA Members (8%↑)

20,583

FY 2021 FFA Members (1%↓)

Gender	FY19	FY20	FY21	Change from FY20
Male	10,964 (57.2%)	11,498 (55.4%)	11,663 (56.7%)	+165 Members
Female	8,124 (42.4%)	9,047 (43.6%)	8,675 (42.1%)	-342 Members
Non-Binary	1 (0.0%)	9 (0.0%)	20 (0.1%)	+11 Members
Non-Disclosed	88 (0.5%)	218 (1.0%)	225 (1.1%)	+7 Members

Race/Ethnicity	FY19	FY20	FY21	Change from FY20
Asian/Pacific Islander	84	97	93	-4.0%
Black	633	810	946	+16.8%
Hispanic/Latino	568	641	605	-5.6%
Native American	147	122	78	-36.1%
Two or More	321	321	337	+5.0%
White	16,230	18,064	17,947	-0.6%
Non-Disclosed	1,194	717	577	-19.5%



Illinois FFA State Officer Team traveled to Southern Illinois University-Carbondale for a statewide meeting from July 12-16, 2021

**Our Leadership Structure**

Our state FFA association is composed of local chapters that are led by student officers currently enrolled in agricultural education at their respective schools. Chapters are regionally organized into 25 sections and five districts. Student officers are selected annually at the chapter and section levels, and five state officers are elected by chapter delegates at the annual state convention in Springfield. Students who serve as a state officers postpone college and career to work full time at the Illinois FFA Center in Springfield and travel the state promoting FFA programs and related student opportunities. This year's state officers are:

- President: Adam Loker, Wayne City
- Vice President: Jatou Shaffer, Blue Ridge
- Reporter: Lauren Mohr, Normal West
- Secretary: Gracie Murphy, Macomb
- Treasurer: Kara Freebairn, Serena



The **National Chapter Award (NCA) program** is designed to recognize FFA chapters that **actively implement the mission and strategies of the organization**. The **2021 State Premier Chapter is Cambridge FFA Chapter** in Cambridge, Illinois.

Cambridge FFA received the highest overall score on the NCA program in Illinois, a direct result of students’ hard work and dedication along with the leadership of a quality agricultural education teacher. Student officers are responsible for planning and implementing the annual Program of Activities, which this year included two nationally recognized activities! See below for more information.

Thirty-five chapters in Illinois were recognized as national finalists in the NCA competition. Four of those chapters were recognized for outstanding achievement in specific areas, and one chapter was recognized as a Model of Excellence finalist.

### Service-Learning SAE Programs

A service-learning Supervised Agricultural Experience (SAE) is conducted by one or more students in which they plan, conduct, and evaluate a project designed to provide a service to their local school, public entities, or the community. It must benefit an organization or group other than the FFA chapter.

- 194** Service-Learning Projects
- 179** Students with Service-Learning SAEs
- 86** FFA Chapters with Service-Learning SAEs

### Service-Learning Winner in 2021

Libby Larkin of the Pontiac FFA Chapter is the 2021 State Proficiency Winner in the area of Service Learning. Her SAE consisted of hosting a food packaging event in her community. She started by researching these types of events after serving as a volunteer at a food packaging event. After learning more, she developed a fundraising plan and made a presentation for potential sponsors. She then scheduled a date and coordinated local volunteers. Meals were then delivered to local schools, clubs, and food pantries. Libby says that, “Unfortunately, food insecurity shows no boundaries.” Libby also shared that she is blessed to have the opportunity to make a difference in people’s lives through food packaging events.



CHSAS FFA



Red Hill FFA



Seneca FFA



Decatur MacArthur FFA

Premier Chapters by Section	
1	Scales Mound
2	Rochelle
3	Cambridge
4	Knoxville
5	Midland
6	Central Burlington
7	Seneca
8	Chicago Ag Sciences
9	Normal Community
10	Cissna Park
11	West Prairie
12	Midwest Central
13	Pittsfield
14	Athens
15	Highland
16	Decatur MacArthur
17	Paxton-Buckley-Loda
18	Hoopeston Area
19	Greenville
20	Altamont
21	Mount Vernon
22	Waterloo
23	Olney
24	Goreville
25	Harrisburg



**Cambridge FFA** was recognized as a finalist in the area of Growing Leaders for its “GOLD Escape Room.” Cambridge planned an exciting virtual escape room as well as a virtual leadership development workshop for the freshmen in order for them become accustomed to the organization and learn how they could become more involved in the FFA. Cambridge FFA was recognized as a finalist in the area of Strengthening Agriculture for its activity called “LIVE! with Legislators.” The officer team partnered with WQAD to present virtual interviews with local legislators about agricultural issues. The officer team set up interviews, organized the videos, and broadcasted them to the community through social media.



**Chicago High School for Agricultural Sciences FFA** was recognized as a finalist in the area of Growing Leaders for its “Virtual Black History Museum.” Members came together to create a virtual museum that all 820 students were able to tour during a week of programming for Black History Month. Students recorded videos and voice overs, and had a section to highlight contributions to agriculture.

**Red Hill FFA** was recognized as a finalist in the area of Building Communities for its activity, called “Window Painting.” FFA members partnered with the Art Club to paint murals on nursing home residents’ windows. This allowed students to interact with local citizens as well as provide a bright spot for the residents during the COVID-19 pandemic.

**Seneca FFA** was recognized as a finalist in the area of Strengthening Agriculture for its activity, called “Skyscrapers and Barons: Our Grain History” The agricultural management classes created displays at the local museum about the history of the grain industry and those involved with it. It also included a display about grain identification and its production.

**Decatur MacArthur Andreas Ag Academy FFA** was recognized as a finalist for the Model of Excellence award area. The Model of Excellence award recognizes chapters that have outstanding achievement across all three areas of the NCA — growing leaders, building communities, and strengthening agriculture.

### Illinois FFA Alumni

Interested in supporting your local agriculture program and FFA chapter? Former FFA members and interested adults are a natural, supportive resource for FFA advisors and their students. A local FFA alumni chapter helps to rally the community around agricultural education and FFA activities. FFA alumni chapters also provide a helping hand to FFA advisors in coordinating activities for the local FFA chapter.



- 241** Alumni Chapters in Illinois
- 10,917** Alumni Members in Illinois
- 65%** of FFA Chapter with Active Alumni

### Alumni Raffle Supports Local Chapters

The Illinois FFA Alumni Association raises money through an annual raffle with proceeds given to local chapters. To raise funds, the state alumni conducts an annual raffle. Amy Kane (Pearl City FFA) of Davis, Illinois, won a Polaris Ranger as a part of the alumni raffle in 2021. \$24,715 was raised through the ranger raffle in 2021. \$10,136 of these funds were given back to local chapters based on local ticket sales. The Alumni also provide scholarships for students to attend state and national leadership conferences each year.



### Alumni and Advisory Councils

Quality programs have close ties with their local agricultural industry. An advisory council is a group of stakeholders that may include representatives from local businesses, school administrators, faculty, and staff who advise the program on development, implementation, and evaluation of the program. As most FFA alumni chapter members fit these same roles, teachers commonly use the local alumni in place of a separate advisory council. This can be an effective structure as FFA alumni meetings can also serve as program advisory meetings.

**54%** — Programs with Advisory Councils in FY 2021



Illinois FFA Alumni Board, 2021





The **Agriculture in the Classroom (AIRC)** program provides **accurate, standards-based agricultural classroom materials** and **resources to preK-12 teachers** across the state.

163,981

PreK-8 Students Reached

78 coalitions

(Covering 86 counties)

Agricultural Literacy County Coalitions

\$627,600

(9.5% of these funds from Ag Ed Line Item)

Dollars Awarded for County Grants

\$8,046

Average Dollars Awarded per Coalition

15,893

PreK-8 Teachers Engaged in AIRC

2,449 (54%)

Schools in IL Engaged in AIRC

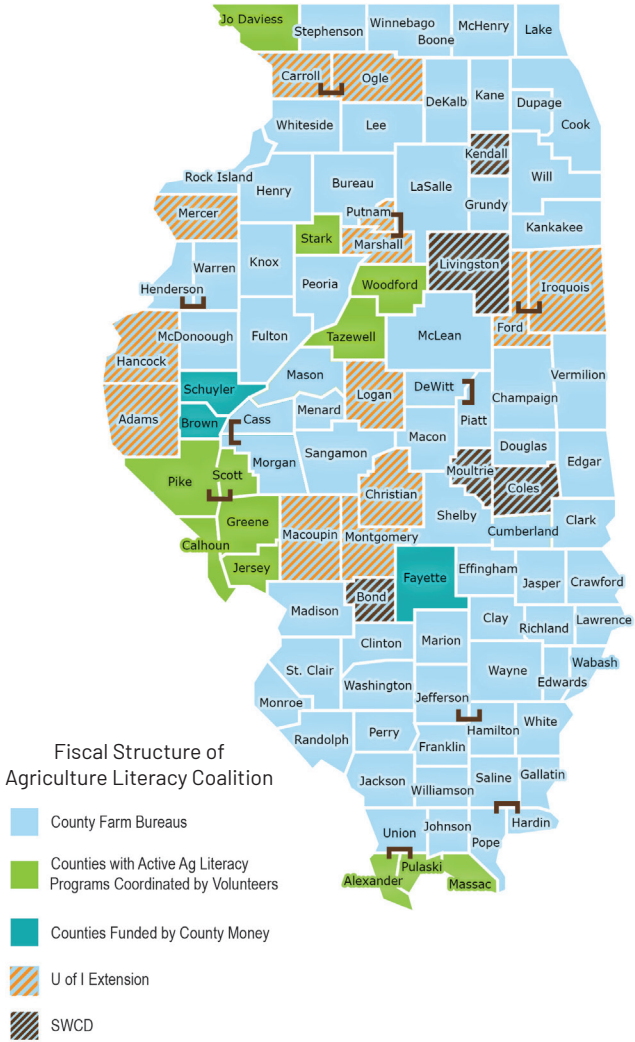
40,169

Community Members Engaged in Agricultural Literacy through AIRC

\$1,593,952

State and Local Dollars Invested for AIRC Statewide

Using the established network of county agricultural literacy coordinators, Illinois AIRC continued to be Illinois' leader in agricultural literacy programming. Matching grants were provided to county coalitions to develop an advisory council and hire an AIRC coordinator. Financial support for AIRC was provided by agricultural organizations and foundations, business and industry partners, commodity groups, farm bureaus, extension, soil and water conservation districts, and private individuals.



**Exploring Agricultural Careers in Grades 5-8**  
 Perkins V allows for federal career and technical education funds to provide career exploration and development activities in Grades 5-8, while state CTE funds can support these activities in Grades K-8. Agricultural education in Illinois has included middle school students since 2009. AFNR courses available to students before ninth grade include Career Exploration — a general careers course that includes exploration of all CTE clusters — and Exploratory Agricultural Science. In Exploratory Agricultural Science, students learn fundamental concepts to serve as a foundation for future courses in high school. Topics include, but are not limited to, animal and plant science, agribusiness, horticultural science, agricultural mechanics, and food science.

**Models of Agricultural Career Exploration in Grades 5-8**  
 Agricultural Education is delivered in Grades 5-8 using different models. Some programs utilize one teacher who instructs both middle and high school students while others utilize a teacher dedicated to just middle school instruction. Ninety-seven local programs (27 percent statewide) report offering AFNR courses to students in Grades 5-8. Approved AFNR courses for middle school include Career Exploration and Exploratory Agricultural Science. Middle school courses offered in AFNR are often implemented in a quarterly rotation with other electives, but may also be offered as a semester- or year-long experience. Course descriptions, recommended outlines, and standards-aligned curricular resources can be accessed on the Illinois Agricultural Education website.

Seventy-three percent of programs offering middle school AFNR courses report using a shared classroom/laboratory space for both middle and high school students. Nine local programs reported engaging middle school students in career exploration activities like leadership conferences, college open houses, and the Farm Progress Show. Nineteen programs reported hosting guest speakers in middle school courses, and 30 programs engaged middle school students in career development events like horticulture, livestock evaluation, and veterinary science. See more information on middle school agricultural education below.

- 69 Programs offering MS Courses equivalent to 10-25% local full-time equivalent (FTE)
- 10 Programs offering MS Courses equivalent to 26-50% local FTE
- 1 Programs offering MS Courses equivalent to 51-74% local FTE
- 17 Programs offering MS Courses equivalent to 75% or more of local FTE
- 37 Programs include MS AFNR Activities in local Annual Report

**Middle School FFA Membership**  
 Students in Grades 7 and 8 are eligible for FFA membership in Illinois. Opportunities for these members include career and leadership development, participation in SAE programs, and achievement of the FFA Discovery Degree. Middle school students are eligible for all FFA activities, including Leadership Development Events (LDE), with the exception of those specifically age-restricted in the rules.

- 7 Stand-Alone Middle School Chapters
- 942 FFA Members in Grades 7-8\*
- 42 FFA Chapters awarding Discovery FFA Degrees to MS Students
- 12 FFA Chapters where MS Members participated in LDEs

\*Includes FFA members from stand-alone middle school programs and combined middle and high school programs.



The **agriculture, food, and natural resources (AFNR) sector**, preK-16 school based agricultural education is very important. World population is currently at 7.9 billion people with projections expected to increase by twenty-three percent to 9.7 billion people by the year 2050.

The need for food, clothing, energy, and related agricultural products and services will continue to be in high demand. With this high demand, a talented workforce of employees will equally be in high demand and important to our economy. For the 2020-21 school year, 32,656 fifth to twelfth grade students were enrolled in AFNR courses. To meet the demand for jobs in the career areas of: agribusiness, animal science, biotechnology, environmental services, food products and processing, natural resources, plant science, and power, structural and technical systems, student enrollment in these courses must increase significantly and proportionately.

Allowing AFNR courses to meet academic graduation requirements and to fulfill college and university course entrance requirements are key. Strategic funding to schools with data driven resources and services are necessary components to double AFNR enrollment by the year 2050. Urban and diverse students in the city of Chicago, third largest city in the United States, and metropolitan areas of Illinois must be targeted for inclusion of school based AFNR education programs with classroom, student leadership organization (FFA), and work-based learning (SAE) components. Developing more AFNR licensed teachers will also be important to teach in these urban metropolitan Illinois cities. Equally important and critical as our population is less connected with where their food comes from, the need for agricultural literacy is vital. Agribusiness representatives, educational leaders, and AFNR state staff will be partnering, collaborating, and working closely together as a team to achieve these goals.



Dean Dittmar, FCAE State Coordinator, on the future of Agricultural Education in Illinois



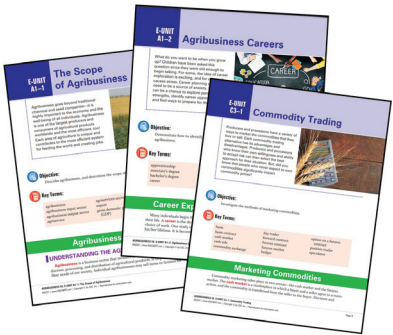
- 345 Programs in SY 2018-19
- 353 Programs in SY 2019-20
- 355 Programs in SY 2020-21
- 17 Average AFNR Class Size
- 77 Programs with Two or More Teachers
- 74 Programs with College Articulation Agreements
- 103 Programs with Dual Credit AFNR Courses
- 100% Programs that Utilize Illinois Core AFNR Curriculum
- 188 Programs with Advisory Councils
- 226 Programs with Alumni Group
- 134 Programs with AFNR Courses in Grades 5-8

- Graduation Requirements fulfilled by AFNR**
- 77% (+5%) Programs offering Science Credit
  - 37% (+/-0%) Programs offering Consumer Education Credit
  - 5% (+3%) Programs offering Math Credit
  - 2% (+1%) Programs offering Social Studies Credit
  - 2% (+1%) Programs offering Language Arts Credit

- Lab Facilities in AFNR Programs**
- 76% with Mechanics Facilities
  - 60% with >10 Computers/Laptops
  - 75% with a Greenhouse
  - 53% with Land/Plant Facilities
  - 70% with 1:1 School Technology
  - 43% with Instructional Landscaping
  - 32% with a Garden
  - 28% with Agriscience Facilities
  - 28% with Aquaculture Facilities
  - 16% with Small Animal/Veterinary Science Facilities
  - 16% with Food Science Facilities
  - 9% with a Nursery
  - 6% with Large Animal Facilities



- Illinois Core Curriculum for AFNR**
- The Illinois Core Curriculum for AFNR is free and accessible to Illinois teachers and administrators at [www.ilaged.org](http://www.ilaged.org). Curriculum libraries are complete, with full lesson plans aligned to Illinois Learning Standards. Each lesson includes a digital textbook (eUnit), presentation slides, related labs and activities, and assessments. The Agribusiness Library was updated in 2021.
- 11 Number of Curriculum Libraries
  - 847 Lessons
  - 80 New Lesson Plans
  - 16 New Instructional Videos



- Teacher Credentials**
- Illinois teachers continually seek professional credentials in various AFNR career pathways to enhance learning for their students. Credentials sought by teachers include:
1. AWS Weld Inspector, Educator, and Welder
  2. Anhydrous Ammonia Applicator and Transportation License
  3. Briggs and Stratton Small Engine Basic Engine Theory Certification
  4. Illinois DNR Hunter Safety Certified Instructor
  5. Introduction to OSHA, OSHA 10, and 30
  6. Illinois Department of Agriculture Certified Pesticide Applicator
  7. SERVSafe Certified Food Handler
  8. Unmanned Aerial Vehicle Pilot License

**Curriculum for Agricultural Science Education (CASE) in Illinois**

CASE is a curriculum and professional development initiative of the National Council for Agricultural Education that is managed by the National Association of Agricultural Educators. CASE courses are developed using elements from pedagogical approaches that are recognized in educational literature. CASE curriculum is available to educators who complete certification through a CASE institute, which is an immersive professional learning experience in a specified course. Illinois teachers have taken on leadership roles within the CASE organization, and many have become certified in CASE curriculum based on local program needs.



CASE Curriculum and Number of IL Teachers Certified	
Agriculture Business Foundations 111	
Introduction to AFNR 79	
Agriculture Science-Animals 50	
Agriculture Science-Plants 42	
Natural Resources & Ecology 15	
Agriculture Power & Technology 14	
Food Science & Safety 12	
Mechanical Systems in Agriculture 6	
Agriculture Research & Development 3	
Animal & Plant Biotechnology 1	
Environmental Science Issues 1	



**Illinois AFNR teachers** are eligible to become members in Illinois’ premier agriculture teacher organization – the Illinois Association of Vocational Agriculture Teachers (IAVAT). **IAVAT offers professional learning, teacher leadership, and advocacy for agricultural education.**

Teachers are professionals, and membership in IAVAT has significant returns on investment. In addition to teacher benefits, students of teacher-members are eligible for discounted registration costs for in state-level competitive events aligned to agricultural careers. Dues for membership are often covered by the members’ schools because of this benefit.



Demographics of IL AFNR Teachers Total Number of Agriculture Teachers in Illinois 455, 2.5% increase from FY 2020	
Male	46%
Female	53%
Didn't Grow Up on a Farm	41%
Member of IAVAT	77%
Under Age 30	36%
Over Age 50	17%
Early Career (Less than five years)	39%
Late Career (More than 25 years)	12%

**Teacher Licensure Demographics**

Teachers in Illinois are licensed to teach AFNR in three main ways. Traditional licensure through an approved university teacher preparation program results in a Professional Educator License (PEL). Alternative means of licensure includes seeking an Educator License with Stipulations (ELS), which requires 60 college credit hours and 2,000 hours of professional experience in AFNR. Another alternative means of licensure includes seeking a CTE-Provisional (CTEP), which requires 8,000 hours of professional experience in AFNR.

Number of Teachers with Professional Educator License: 79%

Number of Teachers with Educator License with Stipulations: 21%

**Teacher Salaries**

Average Teacher Salary in FY 2021: **\$54,799 (0.03% increase from FY 2020)**

Average Starting Teacher Salary in FY 2021: **\$46,770 (0.9% decrease from FY 2020)**

**Building Illinois’ AFNR Teaching Corps**

Agricultural education in Illinois benefits from a growing, diverse corps of professional educators. To continue to grow the number and diversity of AFNR teachers, Illinois’ Team Ag Ed is implementing several initiatives. The Growing Agriculture Science Teachers (GAST) Grant for universities and colleges distributes annual funds to empower students to major in agriscience education. The Joint Board of Directors (IAVAT and FFA) oversees a statewide diversity and inclusion task force to develop initiatives to increase access to agricultural education among diverse students. FCAE initiated a pilot program for school districts to start Minorities in Agriculture, Natural Resources, and Related Sciences (MANRRS) junior chapters at Illinois high schools. FCAE and the IAVAT Recruitment and Retention Committee implement annual initiatives to increase students majoring in agricultural education.



**Outstanding Educators**



The Illinois Association of Vocational Agriculture Teachers is proud to partner with Nationwide Insurance, Illinois Association FFA, Farm Credit Illinois, and Compeer Financial to offer the **Golden Owl Award**.

The Golden Owl Award® allows these organizations to also extend their support to agricultural educators who devote countless hours – and often their own resources – to positively impact the lives of their students. The Golden Owl Award program allows students, fellow teachers, and other supporters to nominate their favorite agricultural teacher and summarize what makes them the best in their state. Nominees can win the distinction of being their state’s Agricultural Educator of the Year.

Sue Schafer was chosen as the 2020-21 Illinois Agricultural Educator of the Year for her extraordinary work as an agricultural teacher at Taylorville High School. Nominations described her as always putting her students first and being able to direct any student, agricultural background or not, toward success according to their individual talents and interests.

District I Winner  
**Kindra Callahan, Kewanee**

District II Winner  
**Kyle Miller, Prairie Central**

District III Winner  
**Corinne Biswell, West Prairie**

District IV Winner  
**Sue Schafer, Taylorville**

District V Winner  
**Josh Berg, Okawville**





Instructors of agriculture at Illinois' **community colleges** and **universities** are eligible for membership in the **Illinois Association of Community College Agriculture Instructors (IACCAI)**. IACCAI **provides members** with opportunities for **professional learning, networking,** and **advocacy** for community college agricultural education programs.



The **Professional Agricultural Students (PAS) organization** prepares students from two- and four-year colleges for the workplace by **building student skills** through **annual competitions** and **real-life learning** applications.



Community College Enrollment Data	
Total Enrollment	3,247 (9.3%↑)
Male	1,721 (53%)
Female	1,526 (47%)
Non-Farm	2,468 (76%)
Farm	779 (24%)
Agricultural Education in HS	1,087 (33%)
Transfer Program	671
Associate in Applied Science Program	1,658
Certificate Program	918

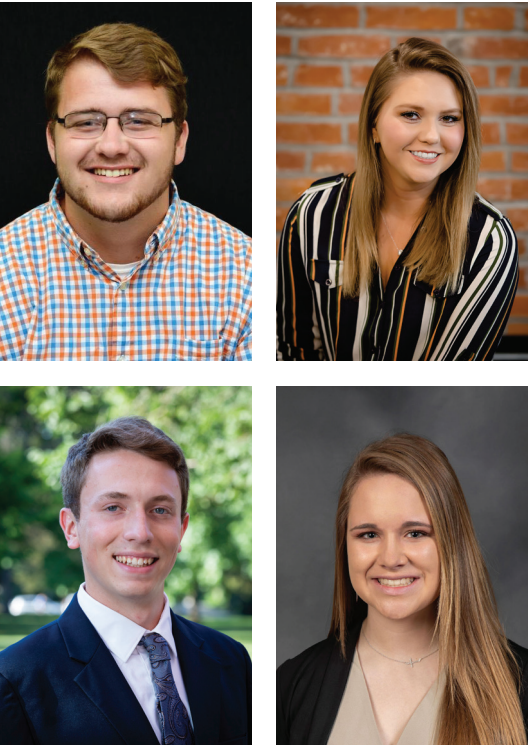
Community College Data	
Programs in AFNR	29
Full-Time Faculty in AFNR	90
Part-Time Faculty in AFNR	115
Average Full-Time Salary	\$67,446
Average Faculty Age	48

Early College Credit Data	
Students Offered Articulated Credit in FY 2021	290
Students Received Dual Credit in FY 2021	643

Statewide Event	High Individual	High Team
Prepared Public Speaking	Kate Czarny, SIUC	N/A
Agribusiness Sales	Brian Kenshol, LLCC	N/A
Agricultural Education	Luke Jesgarz, WIU	N/A
Beef Cattle	Carly Etter, SIUC	SIUC
Crop	Jenna Goeken, ICC	ICC
Floriculture	Erin Anderson, DACC	N/A
Landscape Horticulture	Ian Wilkinson, JJC	N/A
Overall Livestock	Evan Link, ICC	ICC
Precision Agriculture	Haley Ochs, Parkland	N/A
Sheep	Garrett Rhode, ICC	ICC
Soil	Thomas Stamberger, SIUC	SIUC
Swine	Regan Fringer, ICC	ICC
College Bowl	N/A	LLCC

Employment Interview State Winners		
Agricultural Equipment Service	Carson Lobdell, LLCC	N/A
Agribusiness Administration	Jenna Gottschalk, ICC	N/A
Agricultural Education	Luke Jesgarz, WIU	N/A
Agricultural Sales	Braylee Finck, LLCC	N/A
Crop Production	Gavin White, ICC	N/A
Dairy Production	Ryan Michael, ICC	N/A
Feeds and Animal Health	Chase Gore, ICC	N/A
Fertilizers and Agricultural Chemicals	Devin Baker, ICC	N/A
Forestry and Natural Resources	Drake Fandel, ICC	N/A
Fruit and Vegetable Production	Mackenzie Harmon, LLCC	N/A
Landscaping and Nursery	Alexis Carroll, LLCC	N/A
Livestock Production	Spencer Atkinson, ICC	N/A

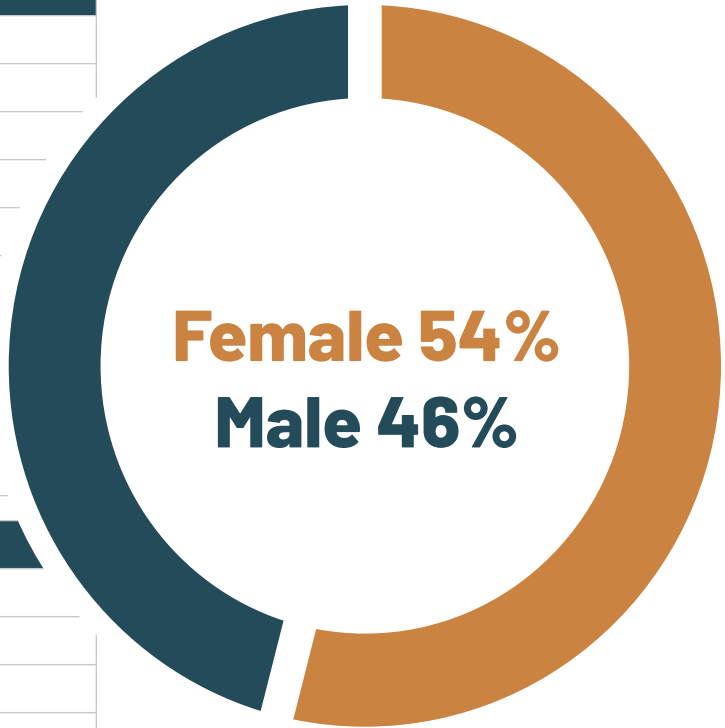
- 11 PAS Chapters  
114 PAS Members
- PAS Student Officers
- President  
Jacob Meyer, Joliet Junior College
- 1st VP  
Alexis Carroll, Lincoln Land Community College
- 2nd VP  
Collin White, Illinois College
- 3rd VP  
Emma Freebairn, Lake Land College





Enrollment Data by University	
Total Number of Undergraduate Students	3,551
University of Illinois at Urbana Champaign	1,912
Southern Illinois University Carbondale	561
Illinois State University	400
Loyola University Chicago	363
Western Illinois University	241
Illinois College	56
Greenville University	18
Percentage of Students-Male	46%
Percentage of Students-Female	54%

Additional Enrollment Data	
Freshman Students	614
Transfer Students	397
University Faculty	605
Graduate Students	567



University Programs

**Collegiate Farm Bureau** provides involvement **opportunities** for students interested in agriculture at **12 chapters throughout Illinois**. The purpose of the **Collegiate Farm Bureau program** is to **bridge the gap** between participation in high school agriculture programs, such as 4-H and FFA, and future involvement as an Illinois Farm Bureau member.

Collegiate members are offered **plentiful opportunities** for **leadership, professional development, and networking** through experiences in **agriculture education, legislation, advocacy, and community service**.

**Chapters**

Black Hawk College – East Campus, Galva  
 Highland Community College, Freeport  
 Illinois Central College, East Peoria  
 Illinois State University, Normal  
 Joliet Junior College, Joliet  
 Kaskaskia College, Centralia  
 Lake Land College, Mattoon  
 Lincoln Land Community College, Springfield  
 Southern Illinois University, Carbondale  
 University of Illinois, Urbana-Champaign  
 Wabash Valley College, Mount Carmel  
 Western Illinois University, Macomb



**Collegiate Farm Bureau Discussion Meet Winner**

Isaac Brockman, Illinois State University, is the state winner for Illinois' collegiate discussion meet. This competition is evaluated on an exchange of ideas and information on a pre-determined topic. Participants build basic discussion skills, develop a keen understanding of important agricultural issues, and explore how groups can pool knowledge to reach consensus and solve problems.

Questions discussed during the meet included:

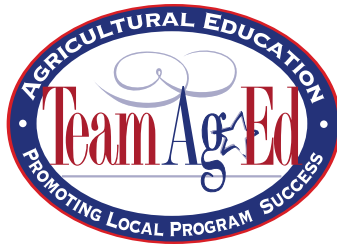
- How can Farm Bureau improve its effectiveness at recruiting Young Farmers and Ranchers members and increase participation?
- How can Farm Bureau policy support easing government regulations to ensure long-term economic viability for local animal processing facilities?
- How can Farm Bureau help farmers and ranchers increase their efficiency in the use of renewable resources and transition to green energy practices?

Also, in the final four were:

- Second place: Seth Mitchell  
Richland County, University of Illinois
- Third place: Leah Moorman  
McDonough County, Western Illinois University
- Fourth place: Zachary Zwiebel  
Will County, Joliet Junior College







Illinois State Board of Education (ISBE) is the state agency responsible for preK-12 education, including career and technical education. Principal consultants serve in a supervisory, administrative capacity related to program approval, funding, and regulatory requirements.

**Board Chair, Darren Reisberg**  
**State Superintendent, Dr. Carmen Ayala**



University Council consists of the agricultural teacher education faculty from the five Illinois universities offering teacher education programs in agriculture, ISBE, FCAE, FFA, and IAVAT. The focus of this group is to maintain high-quality preservice agricultural education programs and to identify research priorities.

**Chair, Dr. Andy Baker**



Illinois Department of Agriculture is the state agency responsible for advocating for Illinois' agricultural industry and providing the necessary regulatory functions to benefit consumers, agriculturalists, and the state's natural resources. The agency also promotes agribusiness in Illinois and throughout the world.

**Director, Jerry Costello II**



Illinois Association of Community College Agriculture Instructors is a professional organization for postsecondary agricultural education teachers at all levels.

**President, Jess Smithers**



Illinois Committee for Agricultural Education is a 13-member committee established by legislation and appointed by the Governor to advise both the Governor and State Board of Education concerning agricultural education for K-12 students.

**Chair, Dr. Amy Leman**



Illinois Professional Agriculture Students organization is a career and technical student organization for students enrolled in agricultural programs at the postsecondary level. PAS provides students with professional development opportunities, helping students get an edge in today's job market.

**President, Jacob Meyer**



Illinois Leadership Council for Agricultural Education is a voluntary, grassroots agricultural industry group focused on the expansion and improvement of agricultural education programs at all levels. ILCAE is primarily an advocacy group focused on legislation that impacts agricultural education.

**Chair, Allyn Buhrow**



Illinois Association of Vocational Agriculture Teachers is a grassroots professional organization for agriculture, food, and natural resource education teachers at all levels.

**President, Lisa Oellerich**



Illinois Farm Bureau is a grassroots, statewide organization of farmers and agricultural professionals dedicated to enhancing the people, progress, and pride of Illinois and its farming community.

**President, Richard Guebert, Jr.**



Illinois Association FFA is a career and technical student organization for students enrolled in agricultural education programs at the middle, high school, and collegiate levels. This organization promotes premier leadership, personal growth, and career success for all agricultural education student members.

**President, Adam Loker**



Facilitating Coordination in Agricultural Education (FCAE) is a state project administered through the ISBE in cooperation with and advised by the Illinois Committee for Agricultural Education. FCAE addresses the aims of Public Act 84-1452 involving the implementation of identified goals for improving education in and about agriculture in Illinois.

**Coordinator, Dean Dittmar**



Illinois FFA Alumni Association supports and promotes the FFA organization and its activities and agricultural education at every level. The focus of the association is the local chapter affiliate.

**President, Steve Yandell**



Illinois Agriculture in the Classroom program combines the efforts of the Illinois Farm Bureau, FCAE, University of Illinois Extension, Association of Illinois Soil and Water Conservation Districts, Illinois Agricultural Commodity organizations, various agribusinesses, and others to provide agricultural literacy for all students at level preK-8. Education

**Director, Kevin Daugherty**



Illinois Foundation FFA is a foundation established to receive and disburse funds to support quality agricultural education programs and FFA chapters across Illinois.

**Chair, Joe Webel**